

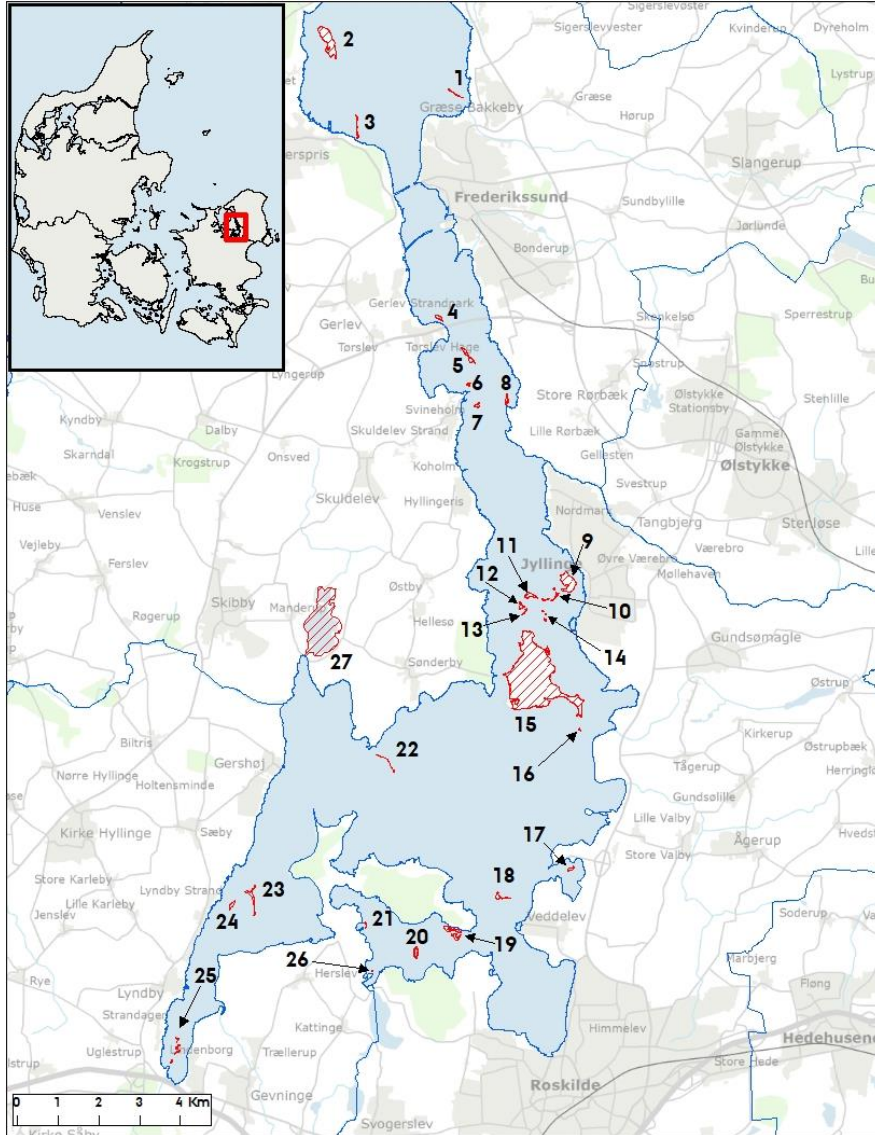
Supplementary material

Thomas Bregnballe*, Peter Sunde & Kevin Kuhlmann Clausen 2021: Occurrence of rats and their impacts on colonial waterbirds in a Danish fjord. — *Ornis Fennica* 99: 37–51.

T. Bregnballe, Department of Ecoscience, Aarhus University,
C.F. Møllers Allé 8, DK-8000 Aarhus C, Denmark
* Corresponding author's e-mail: tb@ecos.au.dk

P. Sunde, Department of Ecoscience, Aarhus University,
C.F. Møllers Allé 8, DK-8000 Aarhus C, Denmark

K.K. Clausen, Department of Ecoscience, Aarhus University,
C.F. Møllers Allé 8, DK-8000 Aarhus C, Denmark



Supplementary Fig. S1. The study area in Roskilde Fjord. The location of individual islets is denoted by a number, corresponding to the numbering used in the tables below.

Supplementary Table S1. Structural factors (distance to mainland, islet size and presence of shrub cover) and coordinates (UTM zone 33) of the individual islets in the study area. Dist: Shortest distance to mainland (m). Area: Area of islets in ha. Shrub: Binary yes/no indicating the presence/absence of shrub.

Characteristics of islets

No.	Islet name	Distance (m)	Area (ha)	Shrub	X	Y
1	Stenø Nord	166	0.2	No	315596	6194532
2	Øksneholm	354	14.4	Yes	312952	6196372
3	Ammesholm	175	0.1	No	312844	6194360
4	Stenø S	77	1.3	Yes	315079	6189319
5	Kølholm	640	3.0	Yes	315658	6188402
6	Peberholmen	149	0.2	Yes	315690	6187605
7	Hyldeholm, Skuldelev	419	0.6	Yes	315821	6187048
8	Gadekærsholmen	70	0.7	Yes	316583	6187141
9	Lilleø	172	11.1	Yes	317721	6182533
10	Langholm, Jyllinge H.	605	0.6	Yes	317361	6182223
11	Flængholm	874	1.2	Yes	316668	6182213
12	Yderste Holm	805	0.8	Yes	316428	6181977
13	Tobaksholm	498	0.6	Yes	316562	6181821
14	Våddragerholmene	823	0.03	Yes	317027	6181571
15	Eskilsø	189	138.5	Yes	316531	6180189
16	Blak	370	0.06	No	317604	6178775
17	Svaleø	226	0.7	Yes	317118	6175430
18	Elleore	564	1.4	Yes	315302	6174878
19	Hesteholmene	12	3.4	Yes	314165	6173968
20	Ringøen	346	2.3	Yes	313138	6173676
21	Sivholm	56	0.2	Yes	312015	6174586
22	Ægholm	710	0.4	No	312869	6178390
23	Langholm, Lejre	540	2.2	Yes	309625	6175377
24	Hyldeholm, Lejre	254	1.6	Yes	309116	6174897
25	Skovholmene	193	1.1	Yes	308251	6172554

Supplementary Table S2. No. of breeding pairs of Mute Swan (*Cygnus olor*) on individual islets in Roskilde Fjord in the period 1988-2009. Islets on which the species was never recorded breeding during 1988-2009 are excluded.

Mute Swan *Cygnus olor*

No.	Islet name	1988	1989	1990	1991	1992	1993	1994	1995	1996	1997	1998	1999	2000	2001	2002	2003	2004	2005	2006	2007	2008	2009	
1	Stenø Nord	0	1	0	0	0	0	0	0	0	0	0	0	0	0	0	0	0	0	0	0	0	0	
2	Øksneholm	41	37	30	36	46	43	42	39	11	28	57	52	48	48	36	37	20	13	18	8	33	25	
3	Ammesholm	1	0	1	0	1	1	0	0	0	0	0	0	0	0	0	0	0	0	0	0	0	0	0
5	Køhlholm	85	79	55	88	83	107	77	63	15	39	49	40	36	25	18	53	49	52	49	15	30	30	
7	Hyldeholm, Skuldelev	5	3	8	10	5	12	3	0	0	0	1	0	0	0	1	3	1	1	1	0	0	0	0
8	Gadekærsholmen	0	0	0	0	1	0	0	0	0	0	0	0	0	0	0	0	0	1	0	0	0	0	0
9	Lilleø	9	18	9	9	15	12	11	9	2	8	11	8	10	8	16	12	29	12	16	6	5	12	
10	Langholm, Jyllinge Holme	38	29	19	22	60	35	21	24	14	23	38	25	26	29	20	35	30	35	21	17	10	22	
11	Flængholm	64	66	56	65	79	72	38	57	12	46	76	55	66	64	53	57	50	60	55	29	24	37	
12	Yderste Holm	41	32	24	45	45	86	30	46	10	38	58	69	75	56	40	48	40	46	39	21	15	35	
13	Tobaksholm	20	18	22	28	45	48	17	29	7	35	40	30	39	37	21	39	19	33	23	6	4	27	
14	Vådrragerholmene	17	13	11	3	21	18	16	12	10	8	5	10	10	5	5	8	3	2	2	0	0	1	
15	Eskilsø	52	50	37	29	63	50	50	51	4	10	20	12	2	0	1	2	2	4	3	3	3	4	
16	Blak	10	6	3	4	4	5	2	0	1	1	0	1	1	1	1	1	1	3	2	1	1	1	
17	Svaleø	3	3	1	9	13	13	8	7	2	6	5	4	8	8	11	11	0	7	4	4	3	3	
18	Elleø	62	78	57	75	96	80	46	60	16	43	59	59	57	59	48	71	68	62	34	31	43	50	
19	Hesteholmene	0	0	0	0	2	0	0	0	0	0	1	0	0	0	0	0	0	0	0	0	0	0	
20	Ringøen	19	19	18	37	39	63	27	34	10	32	27	39	32	36	41	46	28	31	22	16	22	38	
21	Sivholm	3	2	2	2	1	1	1	3	1	1	1	2	1	3	2	5	2	4	2	1	1	1	
22	Ægholm	16	19	10	2	1	1	1	1	0	1	1	1	1	1	1	0	0	0	0	1	1	1	
23	Langholm, Lejre Vig	139	126	103	137	159	160	87	95	15	60	71	66	46	47	47	64	58	71	55	36	58	62	
24	Hyldeholm, Lejre Vig	7	6	15	26	36	59	17	16	2	4	8	7	3	10	8	14	5	10	4	6	9	23	
25	Skovholmene	11	9	20	32	41	27	30	11	6	15	24	23	17	17	21	28	15	28	14	7	7	13	

Supplementary Table S3. No. of breeding pairs of Common Eider (*Somateria mollissima*) on individual islets in Roskilde Fjord in the period 1988-2009. Islets on which the species was never recorded breeding during 1988-2009 are excluded.

Common Eider *Somateria mollissima*

No.	Islet name	1988	1989	1990	1991	1992	1993	1994	1995	1996	1997	1998	1999	2000	2001	2002	2003	2004	2005	2006	2007	2008	2009
1	Stenø Nord	0	0	0	0	0	0	0	0	0	0	0	0	0	0	0	0	0	0	0	5	0	1
2	Øksneholm	5	15	2	15	25	4	20	19	10	30	50	55	52	90	65	75	100	225	2	200	175	30
5	Køholm	0	0	0	0	0	0	0	0	2	3	3	5	7	10	8	20	40	115	100	120	140	110
7	Hyldeholm, Skuldelev	0	0	0	0	0	0	0	0	0	0	0	0	0	0	0	2	0	0	1	0	0	0
9	Lilleø	0	0	0	0	0	0	0	0	0	0	0	0	0	1	4	2	5	10	6	12	14	10
10	Langholm, Jyllinge Holme	0	0	0	0	0	0	1	0	1	2	4	5	4	10	5	1	8	26	31	33	38	48
11	Flængholm	0	0	0	0	0	1	3	2	2	8	14	7	9	20	16	22	34	35	30	40	45	63
12	Yderste Holm	0	0	0	0	0	0	0	0	1	1	2	0	11	12	15	4	10	24	16	24	10	13
13	Tobaksholm	0	0	0	0	0	0	0	0	1	3	0	3	3	5	5	2	9	14	10	15	13	18
14	Våddragerholmene	0	0	0	0	1	0	0	0	1	2	2	1	0	3	3	2	2	4	10	5	3	0
15	Eskilsø	0	0	0	0	1	1	4	7	4	4	5	4	1	0	1	0	0	2	0	0	0	0
16	Blak	0	0	0	0	0	0	0	0	0	2	4	2	5	6	2	6	6	8	8	5	4	5
17	Svaleø	0	0	0	0	0	0	0	0	0	0	0	0	0	0	0	1	0	2	0	0	0	1
18	Elleore	0	0	0	0	0	0	0	0	3	2	3	6	3	4	4	6	9	8	19	14	15	6
20	Ringøen	0	0	0	0	0	0	0	0	0	1	0	0	0	0	1	2	1	2	4	10	15	13
22	Ægholm	0	0	0	0	0	0	0	0	2	8	5	9	10	10	15	25	23	27	35	32	35	40
23	Langholm, Lejre Vig	0	0	0	0	0	0	0	0	0	2	2	2	2	4	5	5	10	7	14	10	17	14
24	Hyldeholm, Lejre Vig	0	0	0	0	0	0	0	0	0	0	0	1	0	0	1	0	2	2	3	5	1	3

Supplementary Table S4. No. of breeding pairs of Pied Avocet (*Recurvirosta avosetta*) on individual islets in Roskilde Fjord in the period 1988-2009. Islets on which the species was never recorded breeding during 1988-2009 are excluded.

Pied Avocet *Recurvirosta avosetta*

No.	Islet name	1988	1989	1990	1991	1992	1993	1994	1995	1996	1997	1998	1999	2000	2001	2002	2003	2004	2005	2006	2007	2008	2009
2	Øksneholm	17	35	36	35	12	3	19	16	16	40	35	30	17	40	50	10	6	5	0	7	15	0
9	Lilleø	10	8	13	6	9	1	0	6	11	22	4	6	14	15	15	25	8	35	41	20	13	5
10	Langholm, Jyllinge Holme	0	2	0	0	0	0	0	0	0	0	0	0	1	0	0	0	0	0	0	0	0	0
11	Flængholm	1	1	2	0	8	0	0	0	0	0	0	0	0	0	0	0	0	0	1	0	0	1
12	Yderste Holm	7	5	0	15	0	0	2	0	0	0	0	0	0	0	0	0	0	0	0	0	0	0
13	Tobaksholm	0	0	0	0	0	0	0	0	0	0	0	0	0	0	0	0	1	0	0	0	0	0
15	Eskilsø	82	25	36	40	21	43	58	52	5	5	17	0	4	1	2	0	4	14	0	0	1	3
17	Svaleø	0	5	0	0	24	18	3	1	29	19	1	13	16	3	22	3	0	0	0	5	3	7
18	Elleore	7	19	10	26	15	3	10	14	4	4	18	2	16	22	7	16	1	2	8	0	2	1
19	Hesteholmene	0	0	0	0	0	2	1	0	0	0	0	0	0	0	0	0	0	0	0	0	0	0
20	Ringøen	0	1	5	0	1	7	9	0	0	0	0	0	0	0	0	1	0	12	12	0	4	0
22	Ægholm	0	0	0	3	4	1	2	5	22	3	0	2	0	0	0	0	0	0	0	0	0	0
23	Langholm, Lejre Vig	5	1	2	12	10	9	12	6	0	0	3	0	1	0	0	0	0	0	0	0	0	0
24	Hyldeholm, Lejre Vig	1	0	0	0	0	0	0	4	6	8	0	1	1	4	8	3	10	5	1	0	0	0

Supplementary Table S5. No. of breeding pairs of Black-headed Gull (*Chroicocephalus ridibundus*) on individual islets in Roskilde Fjord in the period 1988-2009. Islets on which the species was never recorded breeding during 1988-2009 are excluded.

Black-headed Gull *Chroicocephalus ridibundus*

No.	Islet name	1988	1989	1990	1991	1992	1993	1994	1995	1996	1997	1998	1999	2000	2001	2002	2003	2004	2005	2006	2007	2008	2009
2	Øksneholm	895	902	1200	450	625	430	450	700	905	1208	1540	700	700	810	1525	905	350	0	0	175	225	0
5	Kølholm	2000	1100	2000	2000	2000	3000	2500	800	550	3	10	1	0	5	125	375	500	550	550	250	100	0
9	Lilleø	100	250	11	50	250	20	21	85	60	65	100	30	0	65	13	75	12	21	0	52	50	15
10	Langholm, Jyllinge Holme	126	42	75	100	147	171	285	86	0	120	3	14	10	3	75	0	0	21	0	0	0	0
11	Flængholm	0	0	20	0	0	0	0	0	0	0	0	0	0	0	0	0	0	0	0	0	0	0
12	Yderste Holm	200	150	0	500	275	0	25	250	0	0	0	0	0	0	0	0	0	0	0	0	0	0
13	Tobaksholm	140	90	0	75	20	0	5	0	10	0	0	0	0	0	0	0	0	0	0	0	0	0
14	Våddragerholmene	0	0	0	0	6	10	0	0	0	0	0	0	1	0	0	0	0	0	0	0	0	0
15	Eskilsø	569	600	925	120	25	65	136	270	6	0	55	0	0	0	0	0	0	0	0	0	0	0
16	Blak	0	0	0	0	0	0	0	0	0	0	0	0	0	0	6	0	0	0	0	0	0	30
17	Svaleø	0	0	0	50	25	738	1530	820	725	402	400	460	520	850	930	870	0	0	0	0	0	2
18	Elleøre	35	60	5	140	350	50	0	35	3	0	4	9	0	40	20	0	3	0	0	0	0	0
20	Ringøen	5000	1100	600	500	800	600	1200	2000	2700	4750	3500	3200	3160	2650	460	65	15	74	70	92	210	25
21	Sivholm	0	0	0	0	0	0	0	0	0	0	0	0	0	0	75	0	0	0	1	26	0	0
22	Ægholm	0	3	0	130	225	90	25	50	180	4	10	51	130	170	130	1	0	0	0	0	0	0
23	Langholm, Lejre Vig	65	40	40	60	125	110	10	2	0	0	4	1	0	0	0	0	0	0	0	0	0	0
24	Hyldeholm, Lejre Vig	2300	1800	1000	200	0	0	100	11	3	75	0	5	0	4	0	0	15	0	0	0	0	0
25	Skovholmene	2436	1630	1030	1616	1012	1305	1475	1836	1900	230	490	235	350	280	190	76	6	0	0	2	10	15

Supplementary Table S6. No. of breeding pairs of Common Gull (*Larus canus*) on individual islets in Roskilde Fjord in the period 1988-2009. Islets on which the species was never recorded breeding during 1988-2009 are excluded.

Common Gull *Larus canus*

No.	Islet name	1988	1989	1990	1991	1992	1993	1994	1995	1996	1997	1998	1999	2000	2001	2002	2003	2004	2005	2006	2007	2008	2009
1	Stenø Nord	1	0	0	0	0	0	0	0	0	0	0	0	0	0	0	0	0	0	0	0	0	0
2	Øksneholm	220	250	200	200	225	260	310	304	316	460	450	500	272	400	465	475	245	361	255	400	265	50
5	Køholm	175	150	150	100	195	225	220	140	200	125	90	45	50	40	40	15	5	30	25	30	15	30
7	Hyldeholm, Skuldelev	32	40	25	11	0	25	25	60	80	70	80	105	55	90	90	95	0	60	60	50	55	40
9	Lilleø	125	60	70	80	100	80	75	40	90	175	210	230	290	225	275	250	180	400	330	332	325	250
10	Langholm, Jyllinge Holme	164	223	167	115	367	330	512	469	467	547	560	604	591	430	842	577	76	486	343	340	240	170
11	Flængholm	100	85	35	25	50	20	25	20	20	20	15	6	1	6	20	1	1	31	5	5	0	5
12	Yderste Holm	5	0	0	0	7	5	5	1	5	10	10	12	4	15	2	0	0	10	1	3	0	0
13	Tobaksholm	20	35	20	5	5	0	3	1	6	5	10	20	3	6	40	15	0	7	15	3	0	3
14	Våddragerholmene	7	3	15	15	25	30	50	45	55	95	130	72	50	30	12	0	15	10	0	0	0	0
15	Eskilsø	591	488	355	300	415	385	560	485	710	256	233	58	47	45	7	20	27	44	34	46	16	2
16	Blak	40	35	35	30	40	35	62	54	60	95	135	140	151	140	210	230	100	160	200	105	50	50
17	Svaleø	0	0	0	0	0	1	0	0	3	1	0	2	2	0	5	5	1	3	4	10	10	10
18	Elleore	20	15	20	25	25	15	30	25	35	40	30	30	30	5	10	10	5	5	5	6	5	0
20	Ringøen	150	100	100	175	150	125	110	125	75	90	90	100	50	25	60	80	10	35	15	30	15	15
21	Sivholm	0	0	0	0	0	0	0	0	0	0	1	1	0	1	5	0	0	0	0	2	4	0
22	Ægholm	1	0	1	0	2	2	5	1	0	5	25	10	10	15	20	15	0	4	10	20	10	20
23	Langholm, Lejre Vig	70	55	50	35	60	130	125	200	110	300	250	210	85	105	175	108	80	0	115	71	73	0
24	Hyldeholm, Lejre Vig	60	50	45	20	35	10	15	10	25	35	35	20	20	20	25	32	20	25	35	1	13	5
25	Skovholmene	30	41	71	36	58	53	32	43	20	55	24	57	11	35	53	44	25	9	11	12	22	0

Supplementary Table S7. No. of breeding pairs of Herring Gull (*Larus argentatus*) on individual islets in Roskilde Fjord in the period 1988-2009. Islets on which the species was never recorded breeding during 1988-2009 are excluded.

Herring Gull *Larus argentatus*

No.	Islet name	1988	1989	1990	1991	1992	1993	1994	1995	1996	1997	1998	1999	2000	2001	2002	2003	2004	2005	2006	2007	2008	2009
2	Øksneholm	550	425	400	400	450	600	450	575	500	650	600	600	410	650	825	975	700	850	350	625	800	40
5	Køholm	15	10	25	30	25	40	75	55	40	80	60	60	50	40	75	80	100	100	200	75	250	95
6	Peberholmen	0	0	0	0	0	0	0	0	0	0	0	1	0	0	0	0	0	0	0	0	0	0
7	Hyldeholm, Skuldelev	0	0	0	0	0	0	0	0	0	0	0	0	2	0	0	2	0	1	0	1	1	0
9	Lilleø	6	5	4	10	7	4	5	5	7	25	20	10	2	20	50	55	100	50	125	120	125	110
10	Langholm, Jyllinge Holme	3	1	2	1	11	9	10	6	5	14	20	20	11	11	22	11	14	28	33	62	55	41
11	Flængholm	30	20	20	15	60	70	70	50	70	100	130	125	110	125	175	125	115	175	125	125	130	100
12	Yderste Holm	10	15	10	5	15	15	35	8	40	75	75	100	100	75	175	100	125	250	180	225	175	140
13	Tobaksholm	5	3	0	2	5	4	3	2	30	10	20	25	35	45	30	100	45	85	50	70	50	20
14	Våddragerholmene	0	0	0	0	0	0	1	1	2	2	1	0	1	1	3	1	0	0	1	5	0	0
15	Eskilsø	106	136	97	160	128	147	181	172	130	61	21	0	1	2	5	2	3	0	5	2	0	0
16	Blak	1	1	0	2	1	0	0	1	3	1	1	0	0	0	0	0	0	1	0	1	0	0
17	Svaleø	0	0	0	0	0	0	0	0	0	0	0	0	1	0	0	1	0	0	0	2	2	1
18	Elleore	100	100	125	110	125	145	180	140	150	175	180	151	150	180	170	220	202	240	275	250	300	250
20	Ringøen	1	1	1	1	7	3	10	10	10	20	15	20	10	15	30	25	35	20	50	55	50	100
21	Sivholm	0	0	0	0	0	0	0	0	0	0	0	0	0	0	0	0	0	1	0	0	1	0
22	Ægholm	1	0	0	0	0	0	0	0	0	0	1	1	0	3	0	0	1	1	1	2	0	0
23	Langholm, Lejre Vig	75	95	90	120	100	110	150	175	150	175	125	130	150	160	125	150	150	0	160	175	150	50
24	Hyldeholm, Lejre Vig	20	20	10	15	15	25	10	20	35	30	15	25	15	15	25	15	75	50	50	40	55	40
25	Skovholmene	2	3	2	3	3	1	4	7	3	10	1	9	11	14	21	21	11	12	15	10	10	29

Supplementary Table S8. No. of breeding pairs of Common Tern (*Sterna hirundo*) on individual islets in Roskilde Fjord in the period 1988-2009. Islets on which the species was never recorded breeding during 1988-2009 are excluded.

Common Tern *Sterna hirundo*

No.	Islet name	1988	1989	1990	1991	1992	1993	1994	1995	1996	1997	1998	1999	2000	2001	2002	2003	2004	2005	2006	2007	2008	2009
2	Øksneholm	40	60	55	45	45	45	50	18	35	25	45	25	25	40	20	51	0	11	1	32	0	0
5	Køhlholm	40	15	30	20	25	50	33	15	22	20	20	35	2	20	25	0	0	3	0	0	0	0
9	Lilleø	65	50	60	50	75	80	40	65	15	45	70	15	20	11	30	30	23	32	41	40	35	2
10	Langholm, Jyllinge Holme	14	15	0	1	11	21	19	45	30	48	12	35	35	5	0	0	0	32	8	0	0	0
11	Flængholm	0	0	0	0	0	8	5	0	1	0	0	0	0	0	0	0	0	0	0	0	0	0
12	Yderste Holm	85	80	0	55	10	0	55	1	2	20	2	0	0	0	0	0	0	0	0	0	0	0
13	Tobaksholm	8	12	0	15	4	0	1	0	20	1	1	0	0	0	0	0	1	0	0	0	0	0
14	Våddragerholmene	0	0	0	0	0	0	0	2	0	1	0	0	1	1	0	0	0	0	0	0	0	0
15	Eskilsø	55	71	85	30	45	72	38	46	0	0	8	0	1	0	1	0	0	0	0	0	0	0
16	Blak	0	0	0	0	0	0	0	0	0	0	0	0	0	0	0	0	0	0	0	0	0	5
17	Svaleø	0	0	0	1	8	31	8	32	17	21	13	25	3	11	0	27	0	0	0	0	0	0
18	Elleø	1	3	4	5	5	1	0	4	0	0	0	0	0	0	0	0	0	0	0	0	0	0
20	Ringøen	70	35	30	45	38	5	30	0	20	25	30	25	35	20	33	50	0	35	45	25	0	2
22	Ægholm	30	5	6	30	15	5	12	30	40	10	1	5	0	2	0	6	0	0	0	0	0	0
23	Langholm, Lejre Vig	35	35	35	28	32	27	27	1	0	0	12	0	0	0	0	0	0	0	0	0	0	0
24	Hyldeholm, Lejre Vig	2	0	0	30	23	2	0	35	3	25	3	0	0	0	3	0	0	0	0	0	0	0
25	Skovholmene	51	52	49	27	8	31	45	30	8	9	30	20	18	15	20	11	27	7	15	8	15	14

Supplementary Table S9. No. of breeding pairs of Arctic Tern (*Sterna paradisaea*) on individual islets in Roskilde Fjord in the period 1988-2009. Islets on which the species was never recorded breeding during 1988-2009 are excluded.

Arctic Tern *Sterna paradisaea*

No.	Islet name	1988	1989	1990	1991	1992	1993	1994	1995	1996	1997	1998	1999	2000	2001	2002	2003	2004	2005	2006	2007	2008	2009
2	Øksneholm	55	55	25	35	40	65	75	75	85	75	72	68	30	72	32	2	12	0	25	22	0	20
3	Ammesholm	2	2	0	0	1	0	0	0	0	0	0	0	0	0	0	0	0	0	0	0	0	0
5	Køholm	0	0	0	2	1	2	0	0	0	0	0	0	0	0	0	0	0	0	0	0	0	0
9	Lilleø	65	55	20	85	90	75	125	80	150	150	55	43	40	105	64	22	94	60	85	60	97	50
10	Langholm, Jyllinge Holme	0	0	0	2	11	2	2	1	0	0	14	38	10	5	0	0	0	0	0	0	0	0
11	Flængholm	0	0	0	2	0	0	0	0	0	0	0	0	0	2	0	0	0	0	0	0	0	0
12	Yderste Holm	1	2	3	0	0	1	0	0	0	0	0	0	0	1	0	0	0	0	0	0	0	0
13	Tobaksholm	5	0	0	0	0	0	0	0	0	0	1	1	1	1	1	0	0	0	0	0	0	0
14	Våddragerholmene	0	0	0	0	0	2	0	0	0	0	0	1	0	0	1	0	0	0	0	0	0	0
15	Eskilsø	61	27	49	25	28	62	45	25	21	25	36	8	5	3	2	4	6	2	1	5	7	6
16	Blak	20	15	10	21	12	15	8	4	16	10	12	10	7	0	0	0	0	0	0	0	0	0
17	Svaleø	0	0	0	4	0	10	0	0	0	0	2	2	0	2	0	0	0	0	5	0	0	0
18	Elleø	15	15	20	15	6	10	15	14	20	18	15	12	7	3	10	11	7	11	7	1	2	0
20	Ringøen	5	5	0	1	0	3	0	0	3	1	1	0	0	5	5	0	2	0	0	0	0	0
22	Ægholm	0	20	40	20	10	35	25	45	5	20	30	5	0	10	13	2	2	2	1	0	0	0
23	Langholm, Lejre Vig	4	12	10	2	6	7	0	0	0	1	0	0	0	0	0	0	0	0	0	0	0	0
24	Hyldeholm, Lejre Vig	1	0	1	10	9	8	4	10	17	8	2	1	8	8	6	3	0	2	0	0	0	0
25	Skovholmene	4	5	0	2	4	4	7	5	4	5	3	8	11	10	6	1	4	5	2	0	0	0

Supplementary Table S10. Weather factors of the winters included in the analysis of rat colonization and extinction (average winter temperature and presence of local ice winters in the study area).

Winter	Average temp (dec-feb)	Ice winter
1987-1988	3,53	No
1988-1989	4,6	No
1989-1990	4,5	No
1990-1991	1,87	No
1991-1992	3,8	No
1992-1993	2,6	No
1993-1994	1,77	Yes
1994-1995	3,13	No
1995-1996	-1,37	Yes
1996-1997	1,2	Yes
1997-1998	3,93	No
1998-1999	1,93	No
1999-2000	3,2	No
2000-2001	2,8	No
2001-2002	3,07	No
2002-2003	0,37	Yes
2003-2004	2,23	No
2004-2005	3,03	No
2005-2006	1,17	Yes
2006-2007	4,97	No
2007-2008	4,43	No
2008-2009	2,03	No

Supplementary Table S11. Occurrence and abundance score (1-3) of rats on islets in the period 1988-2009. Empty cells denote that we do not have qualified information about presence/absence of rats on the individual islet in that particular year (these are mainly small islets).

Rats *Rattus norvegicus*

No.	Islet name	1988	1989	1990	1991	1992	1993	1994	1995	1996	1997	1998	1999	2000	2001	2002	2003	2004	2005	2006	2007	2008	2009	
1	Stenø Nord	0	0	0	0	0					0	0	0	0	0	0					0	0	0	
2	Øksneholm	0	0	0	0	0	0	0	0	0	0	0	0	0	0	0	0	0	0	0	0	0	0	0
3	Ammesholm	0	0	0	0	0	0	0	0	0	0	0	0	0	0	0					0	0	0	0
4	Stenø S	0	0	0																	0	0	0	0
5	Kølholm	1	3	0	0	0	0	1	3	0	1	1	3	3	1	1	0	0	0	0	3	3	3	3
6	Peberholmen	0									0	0	0	0	0	0					0	0	0	0
7	Hyldeholm, Skuldelev	0	0	0	0	0	0	0	0	0	0	0	0	0	0	0	2	2	2	1	1	1	2	2
8	Gadekærsholmen	0	0	0	0	0	0												0		0	0	0	0
9	Lilleø	0	0	0	0	0	2	0	0	0	0	0	0	0	0	0	0	0	0	0	0	0	0	0
10	Langholm, Jyllinge H.	0	0	0	0	0	1	0	0	0	0	0	0	0	0	0	0	0	0	0	0	0	0	0
11	Flængholm	0	0	0	0	0	0	0	0	0	0	0	0	0	0	0	0	0	0	0	0	0	0	1
12	Yderste Holm	0	0	2	0	2	2	0	0	0	0	0	0	0	0	0	0	0	0	0	0	0	1	2
13	Tobaksholm	0	0	2	0	2	2	0	0	0	0	0	0	0	0	0	0	0	0	0	0	0	1	1
14	Våddragerholmene	0	0	0	0	0	0	0	0	0	0	0	0	0	0	0	0	0	0	0	0	0	0	0
15	Eskilsø	0	0	0	0	0	0	0	0	1	1	1	1	0	0	0	0	0	0	0	0	0	0	0
16	Blak	0	0	0	0	0	0	0	0	0	0	0	0	0	0	0	0	0	0	0	0	0	0	0
17	Svaleø	0	0	0	0	0	0	0	0	0	0	0	0	0	0	0	0	0	0	0	0	0	0	0
18	Elleore	0	0	0	0	0	0	0	0	0	0	0	0	0	0	0	0	0	0	0	0	0	0	0
19	Hesteholmene		0	0		0	0	0	0	0	0	0	0	0	0	0					0	0	0	0
20	Ringøen	0	3	0	0	0	0	0	0	0	0	0	0	0	0	0	0	0	0	0	0	0	0	0
21	Sivholm	0	0	0	0	0	0	0	0	0	0	0	0	0	0	0	0	0	0	0	0	0	0	0
22	Ægholm	0	0	0	0	0	0	0	0	0	0	0	0	0	0	0	0	0	0	0	0	0	0	0
23	Langholm, Lejre	0	1	0	0	0	0	0	0	1	0	0	3	3	3	0	1	0	0	0	0	0	3	3
24	Hyldeholm, Lejre	0	3	1	0	0	3	1	2	2	1	0	3	3	3	0	1	0	0	0	0	0	0	3
25	Skovholmene	0	1	0	2	0	1	0	0	0	0	0	0	1	1	1	1	0	0	0	0	0	0	1