

Supplementary material

Svein Dale & Ellen T. Andreassen: Population decline of the Siberian Tit (*Poecile cinctus*) in southern Norway and an assessment of possible causes. — *Ornis Fennica* 93: 77–87.

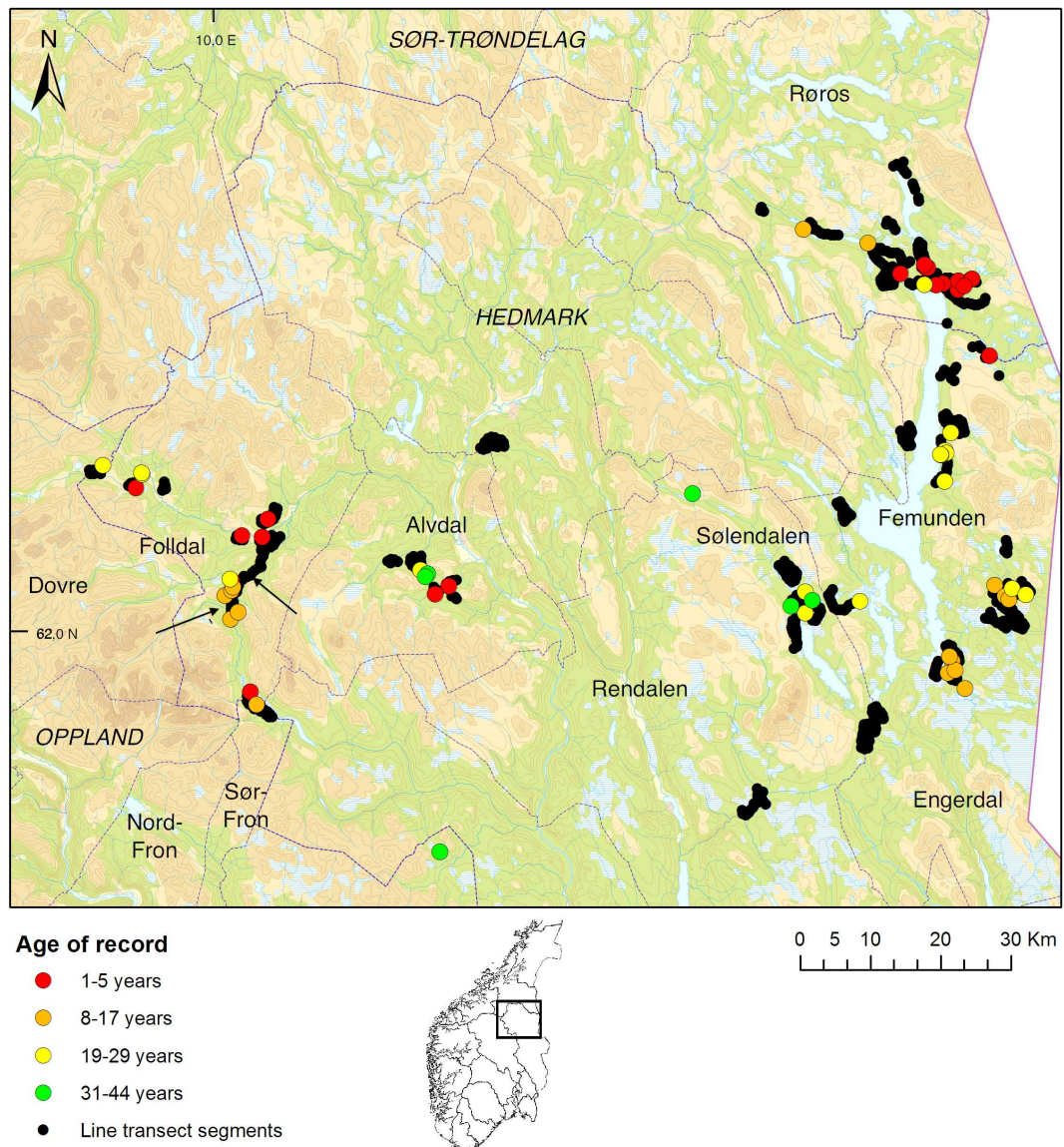


Fig. S1. Geographical distribution and time of observation for previous records of Siberian Tits *Poecile cinctus* in southern Norway, and location of line transects conducted in 2011–12. Age of records is with reference to 2011 = 1 year. Arrows point to the two sites (Åsen and Stadsbuøyi-Grimsmoen) which were censused by Sonerud (1982) and recensused in 2011. Location of map is shown on miniature map of southern Norway.