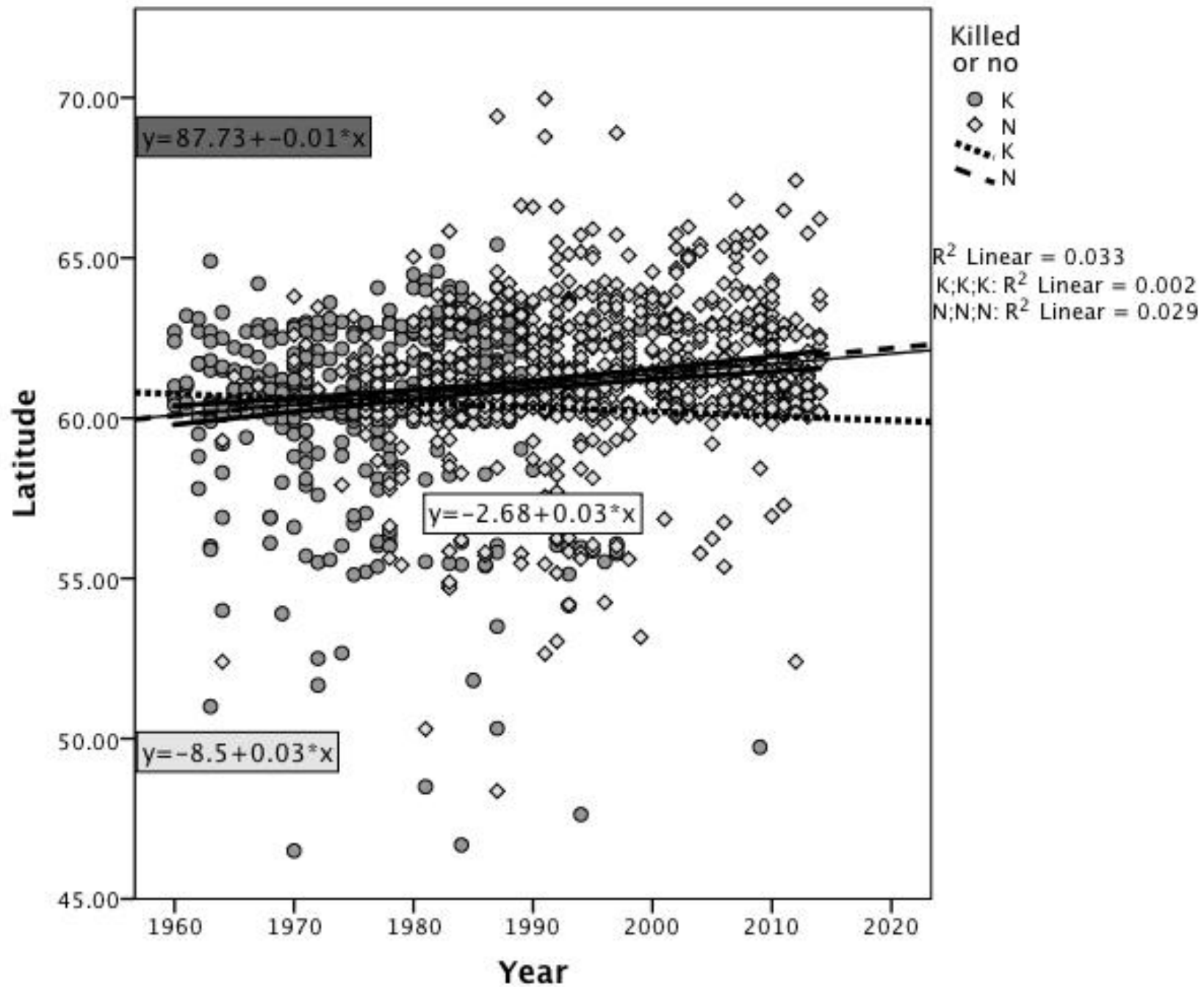
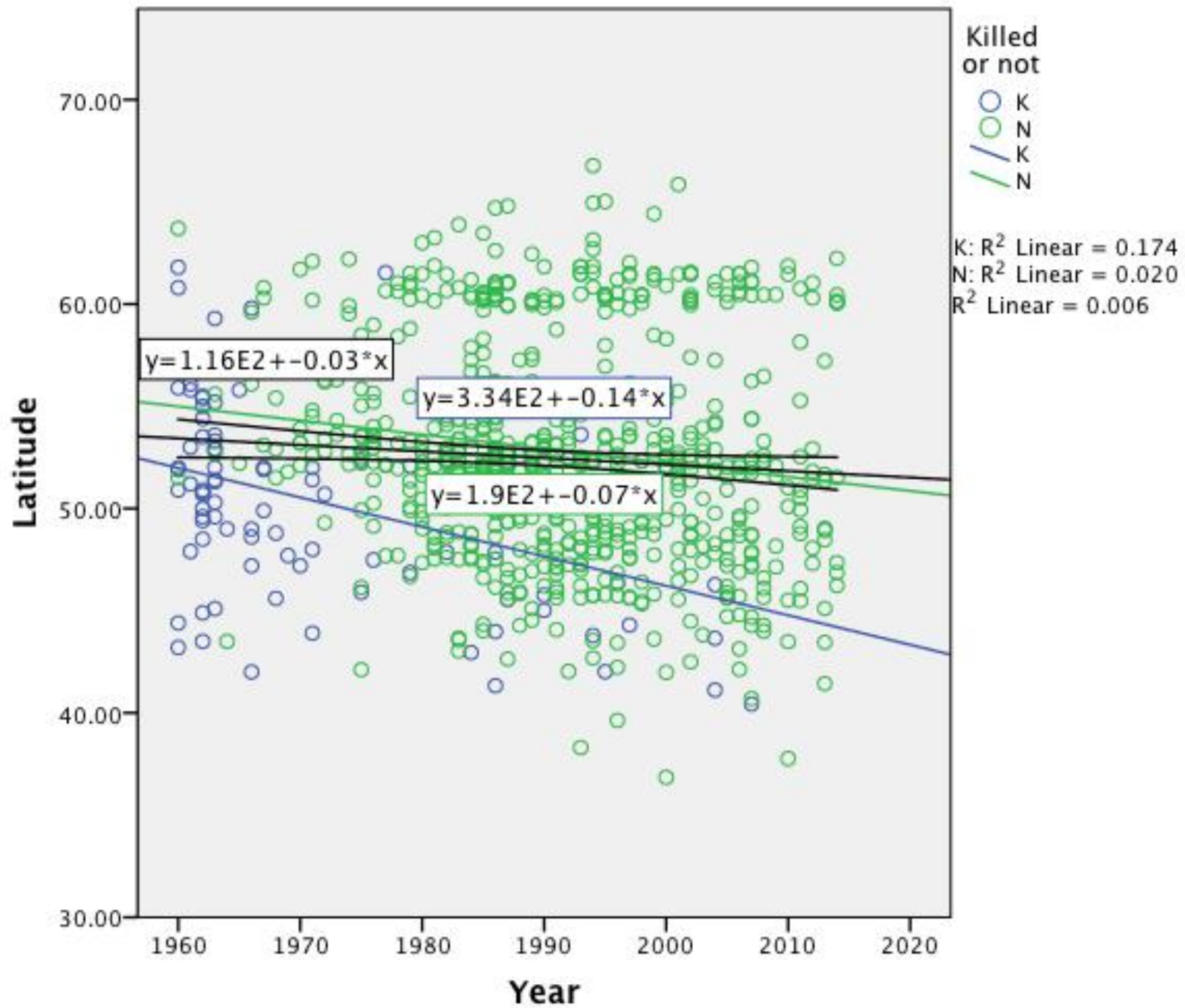


APPENDIX 1: Graphs showing data summarised in Table 1 in the main text. For each species, graphs show the relationship between year and latitude at which each ringed individual was recovered (winter months only), with the shape of the datapoints indicating whether that individual had been killed intentionally or not. Graphs are in alphabetical order by the species' Latin name.

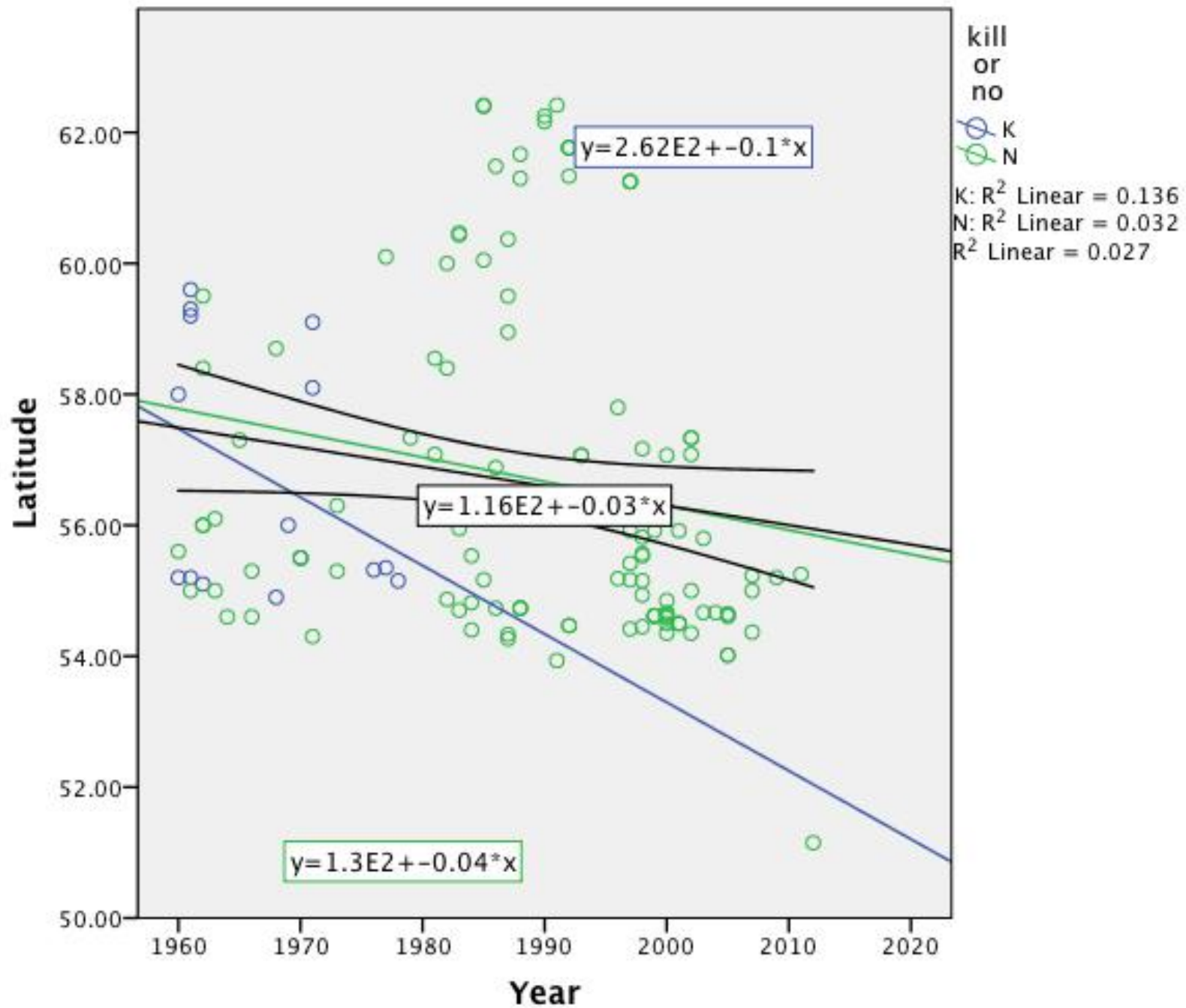
Accipiter Gentilis



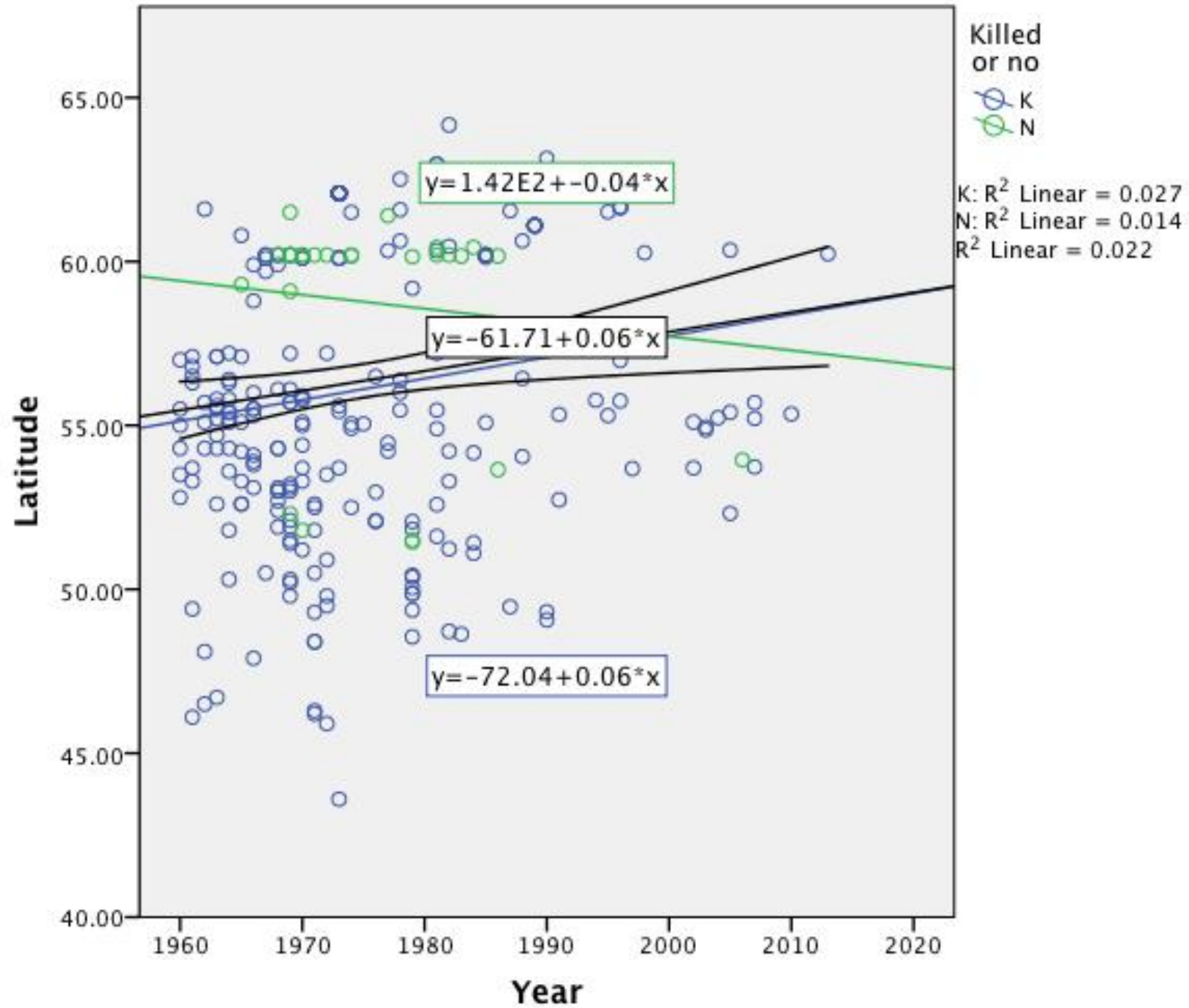
Accipiter Nisus



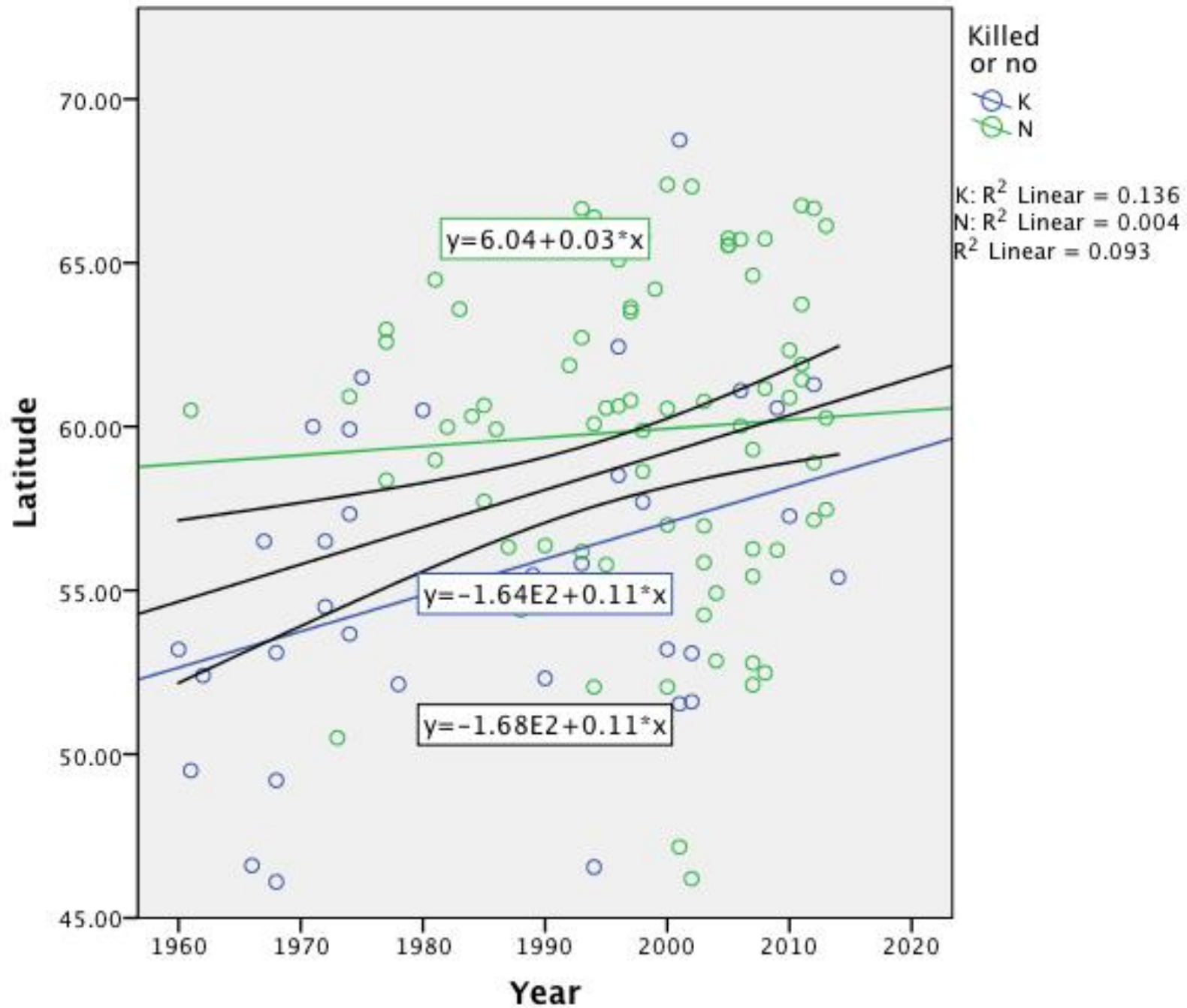
Alca Torda



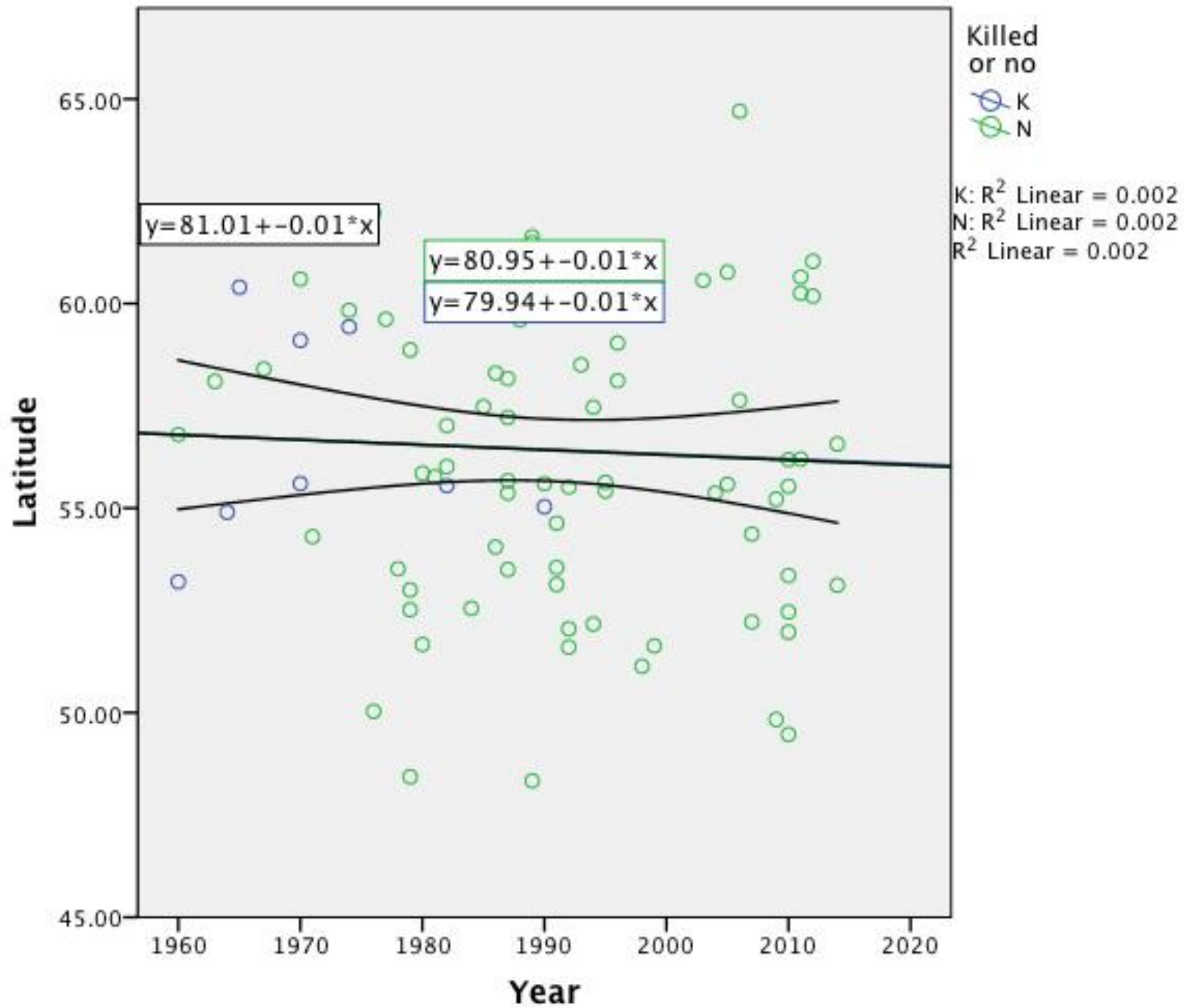
Anas platyrhynchos



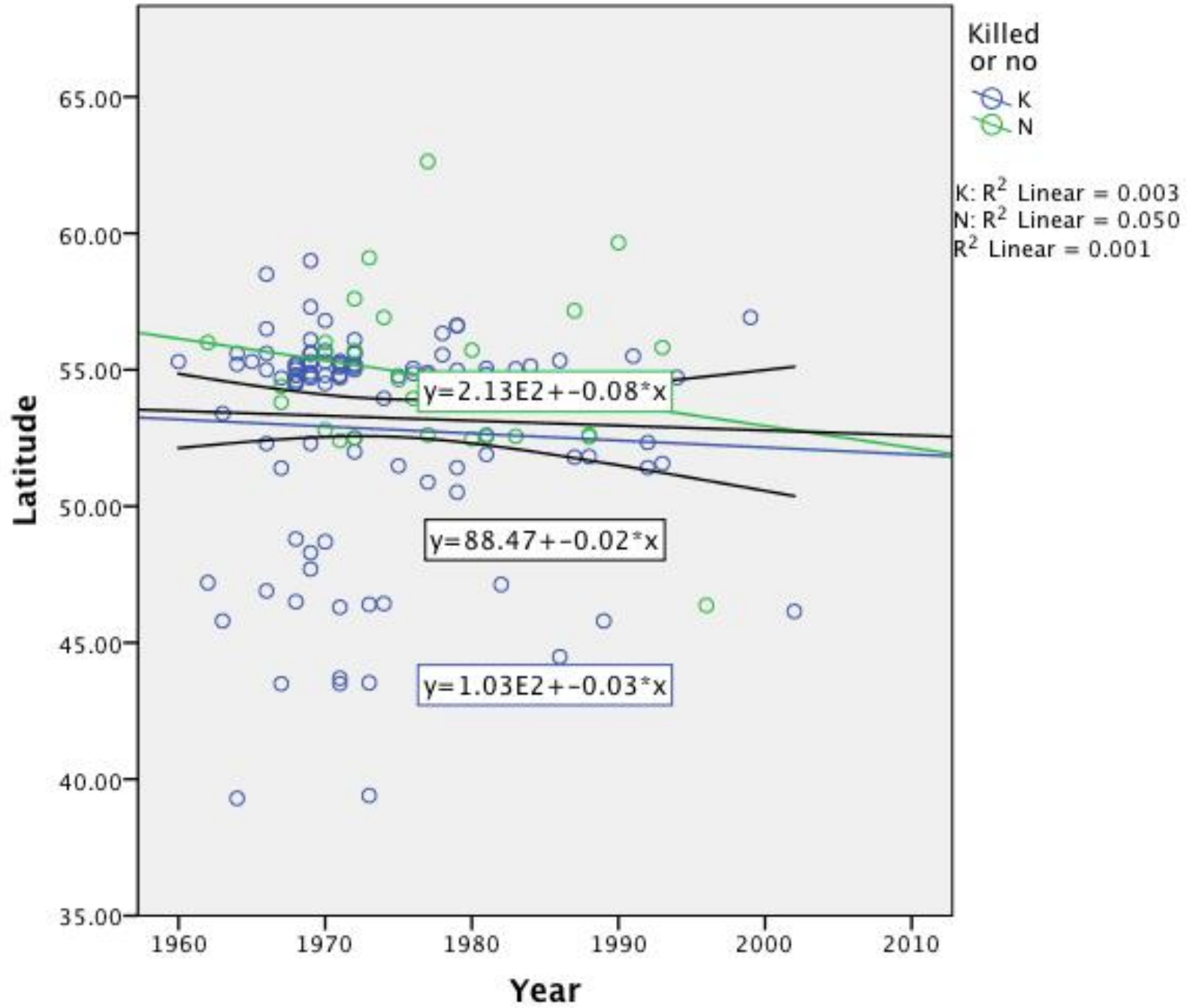
Aquila chrysaetos



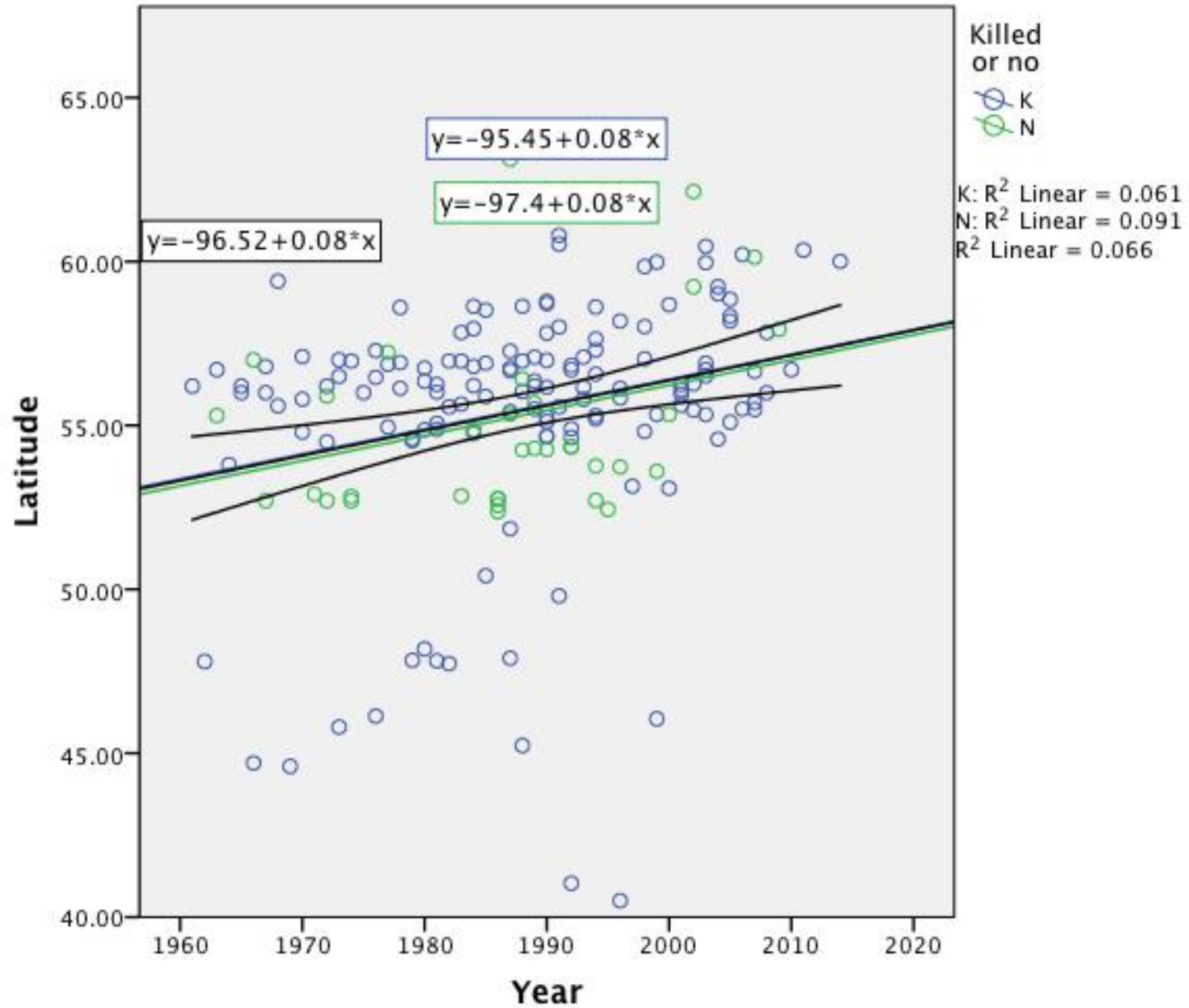
Asio flammeus



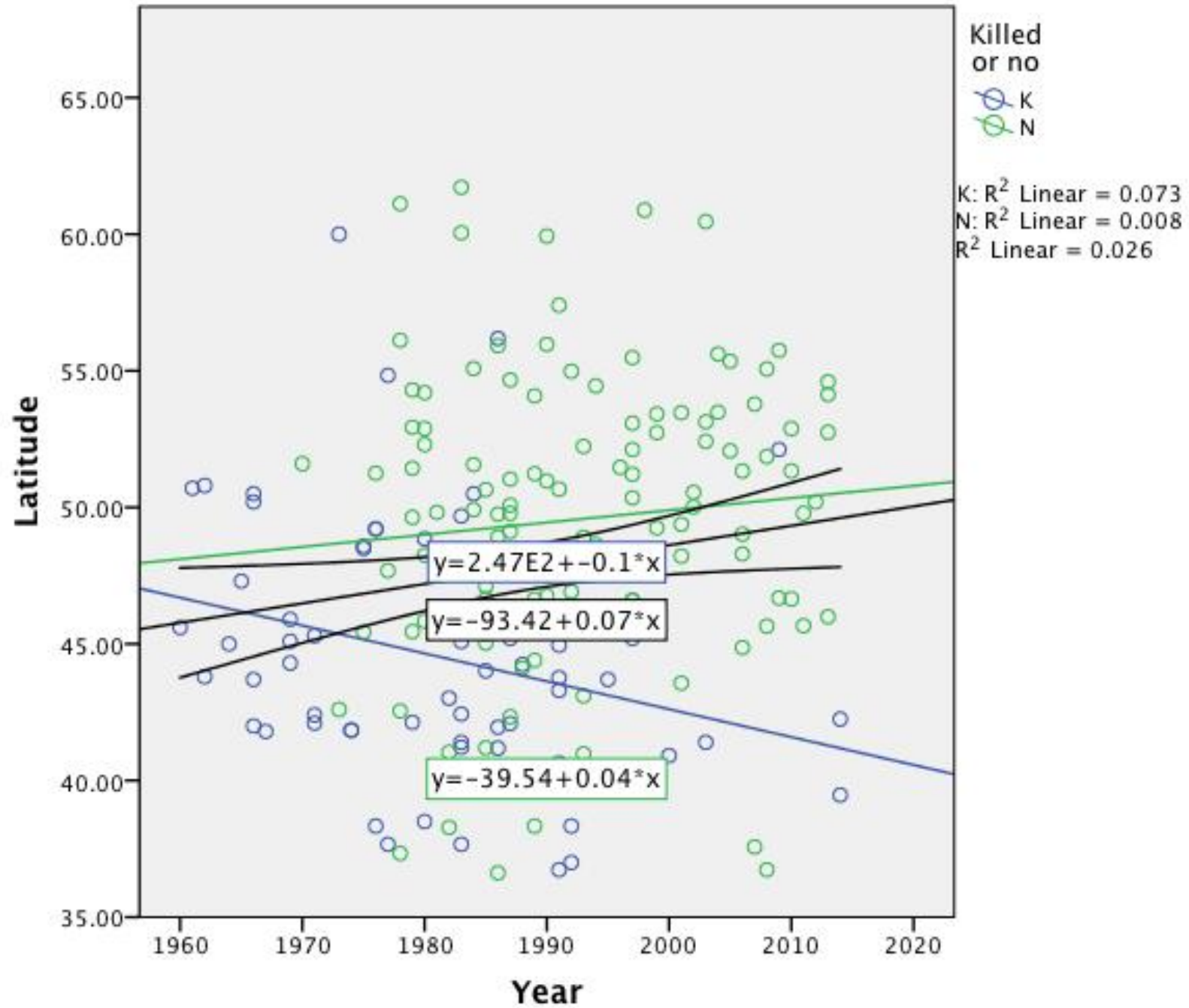
Aythya fuligula



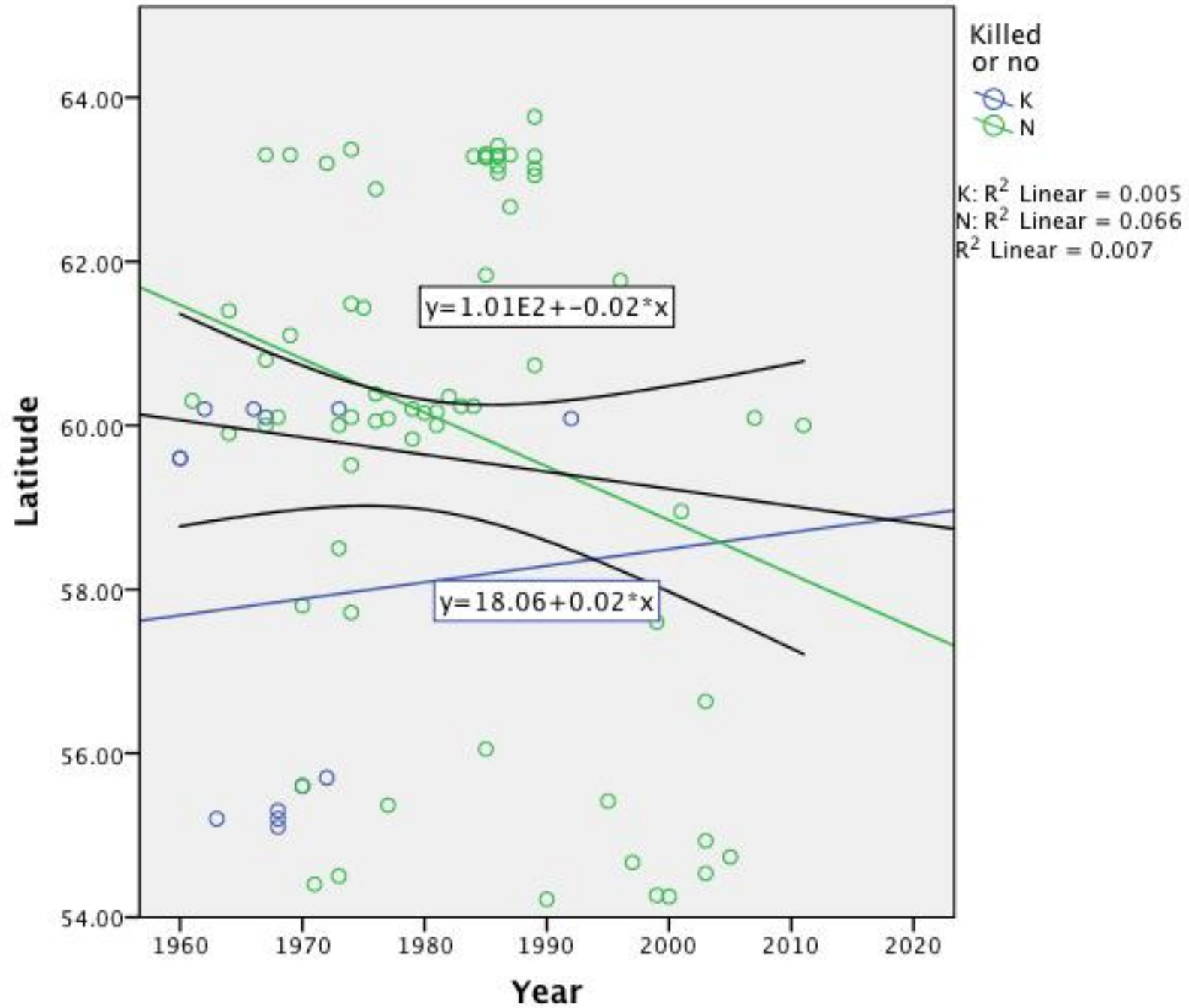
Bucephala clangula



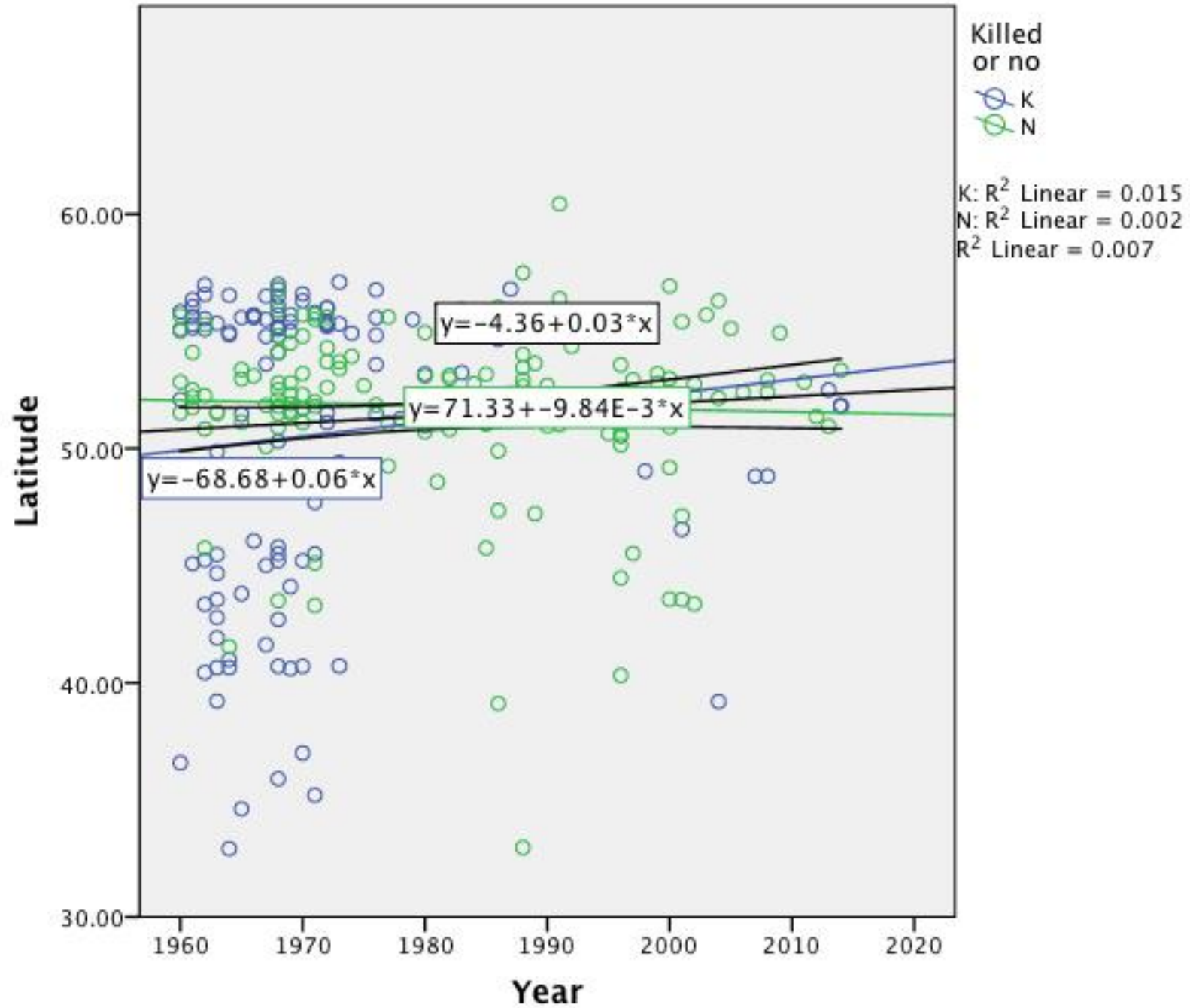
Buteo buteo



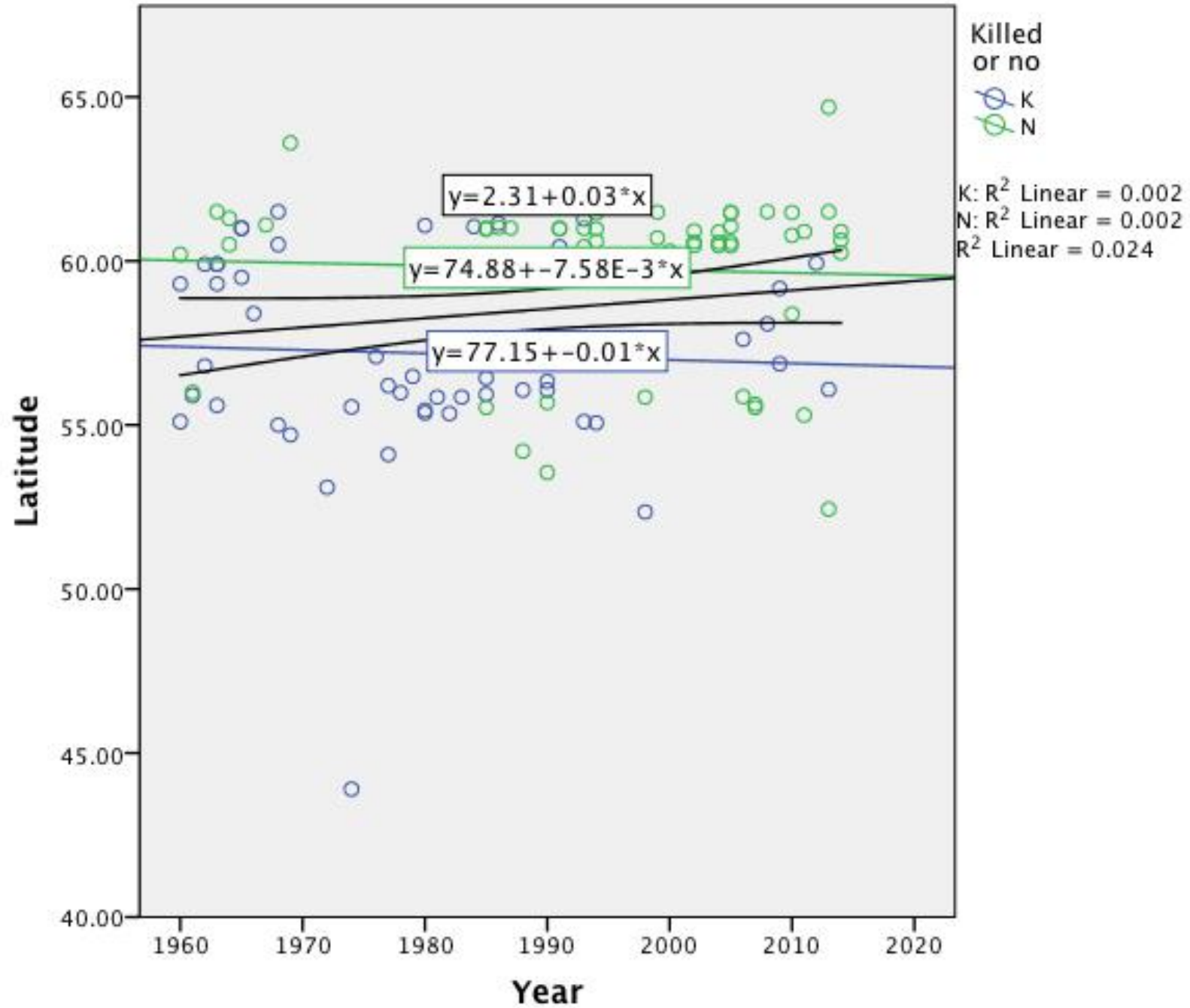
Cepphus grylle



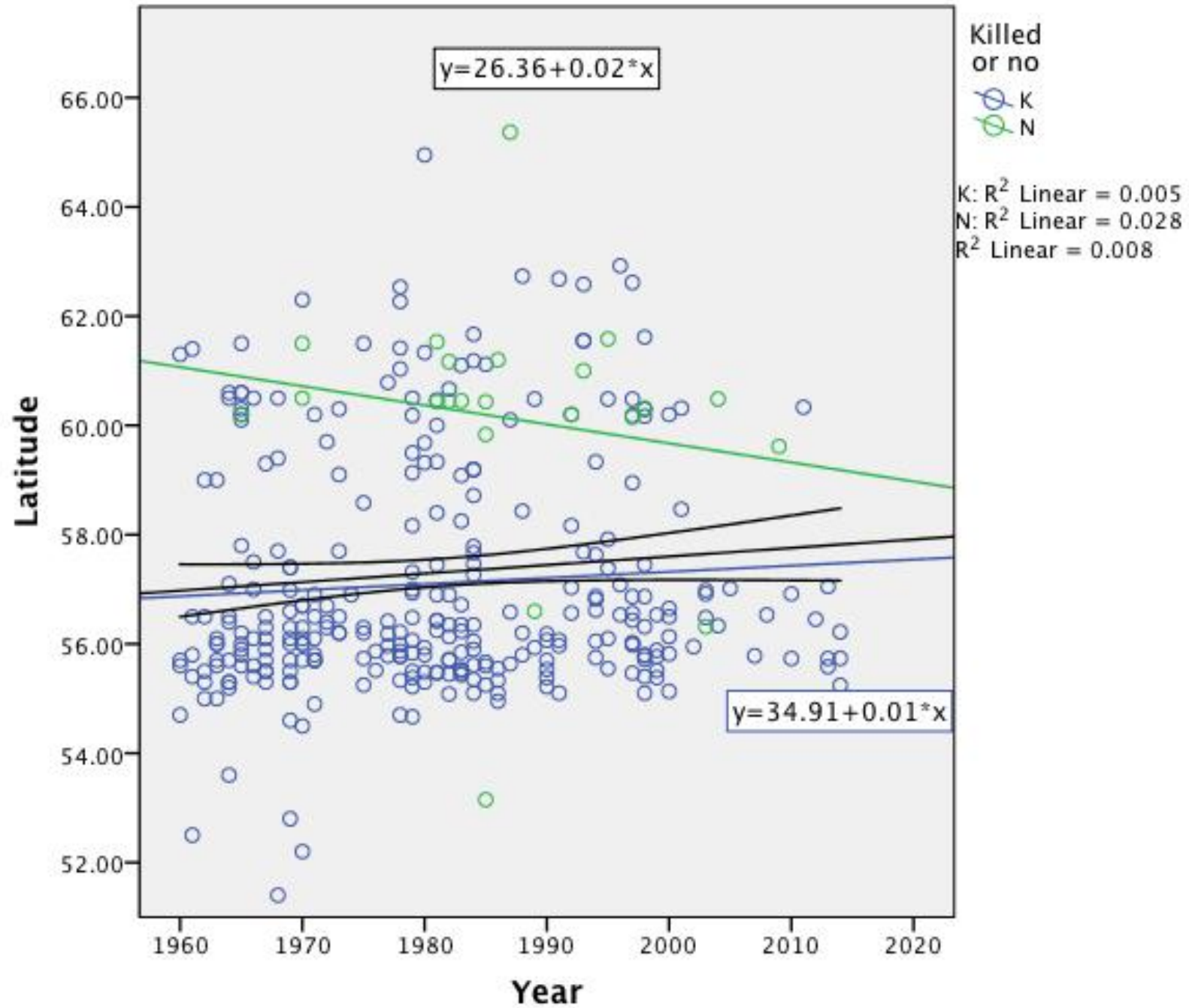
Chroicocephalus ridibundus



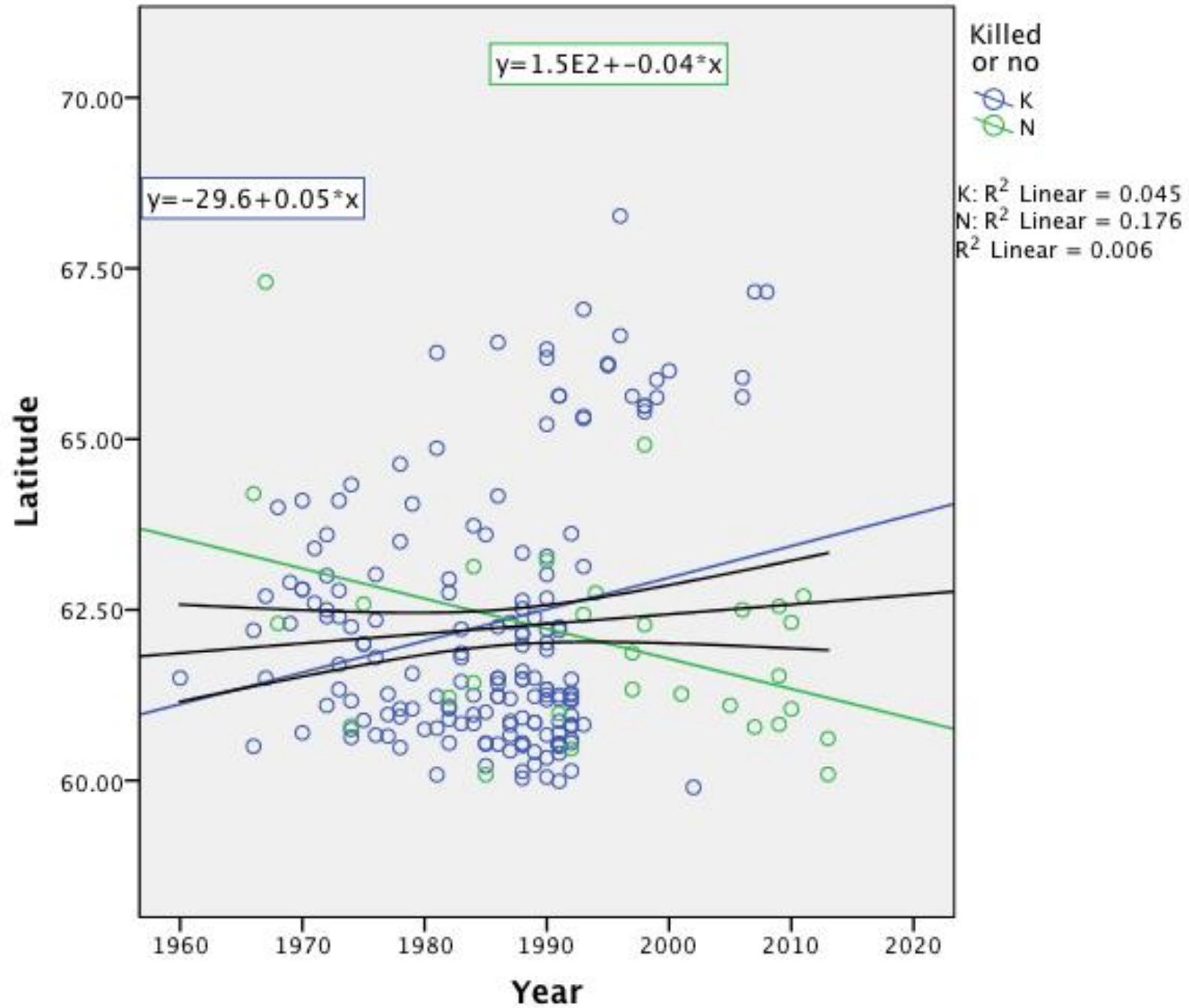
Corvus monedula



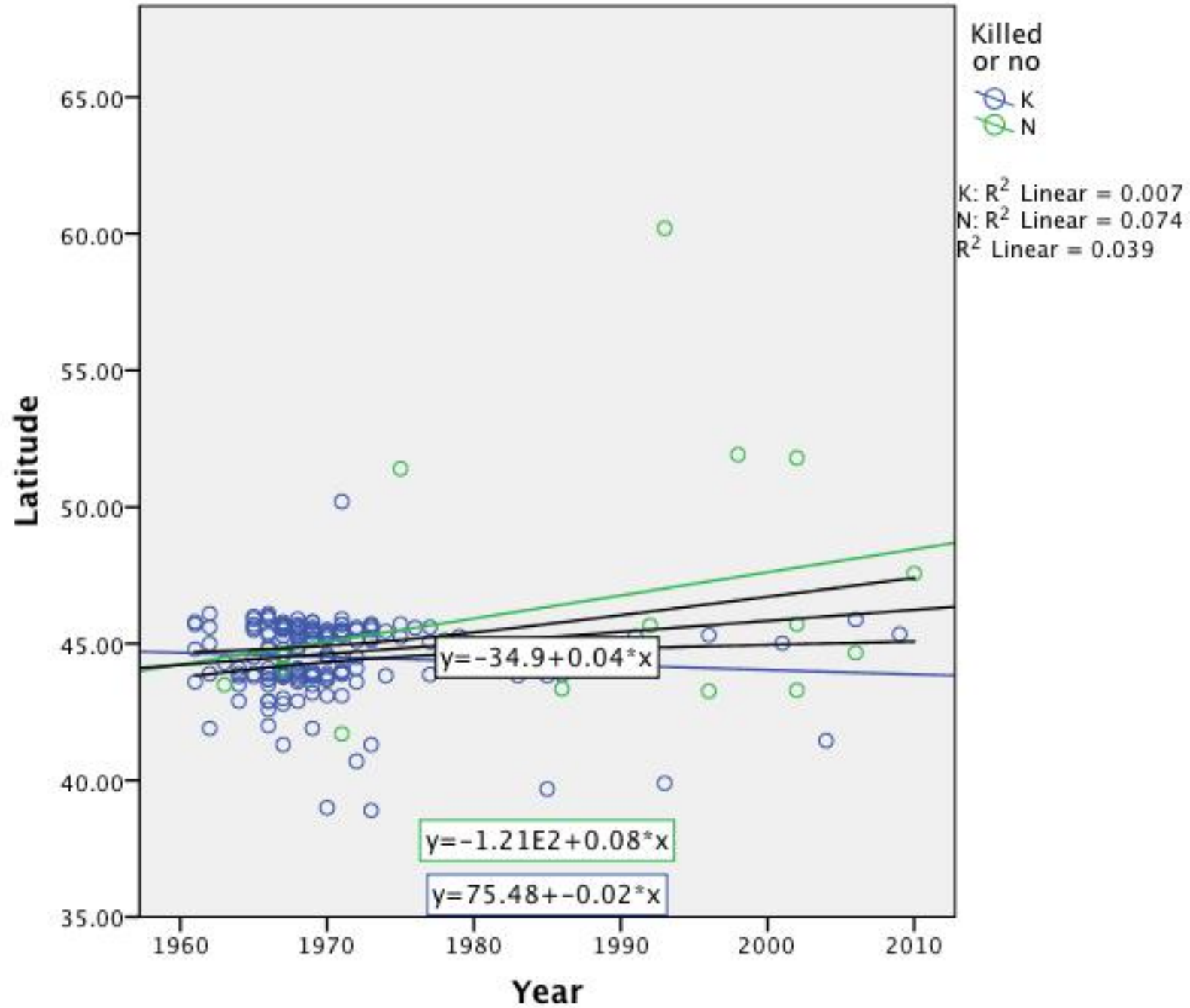
Corvus corone



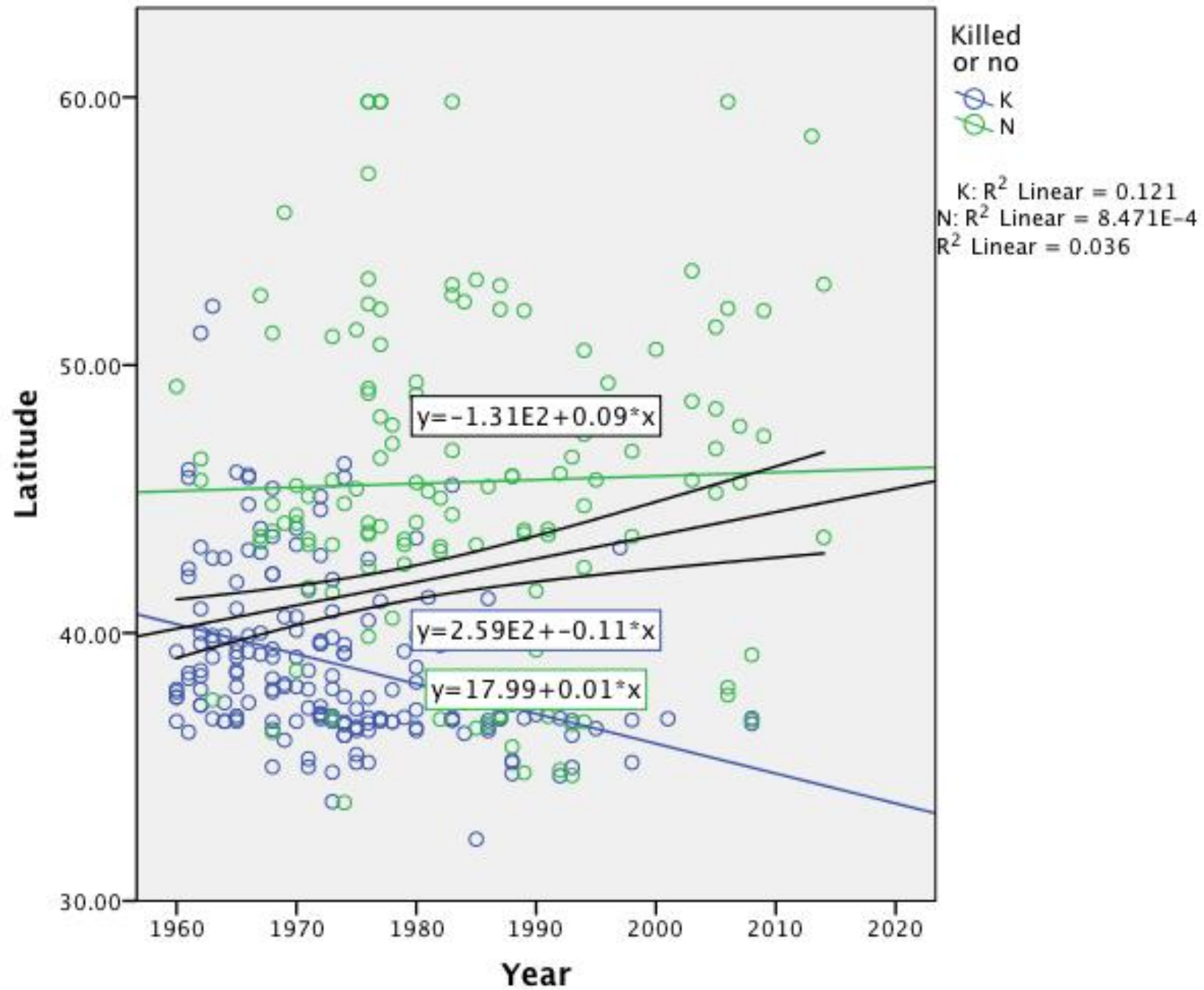
Corvus corax



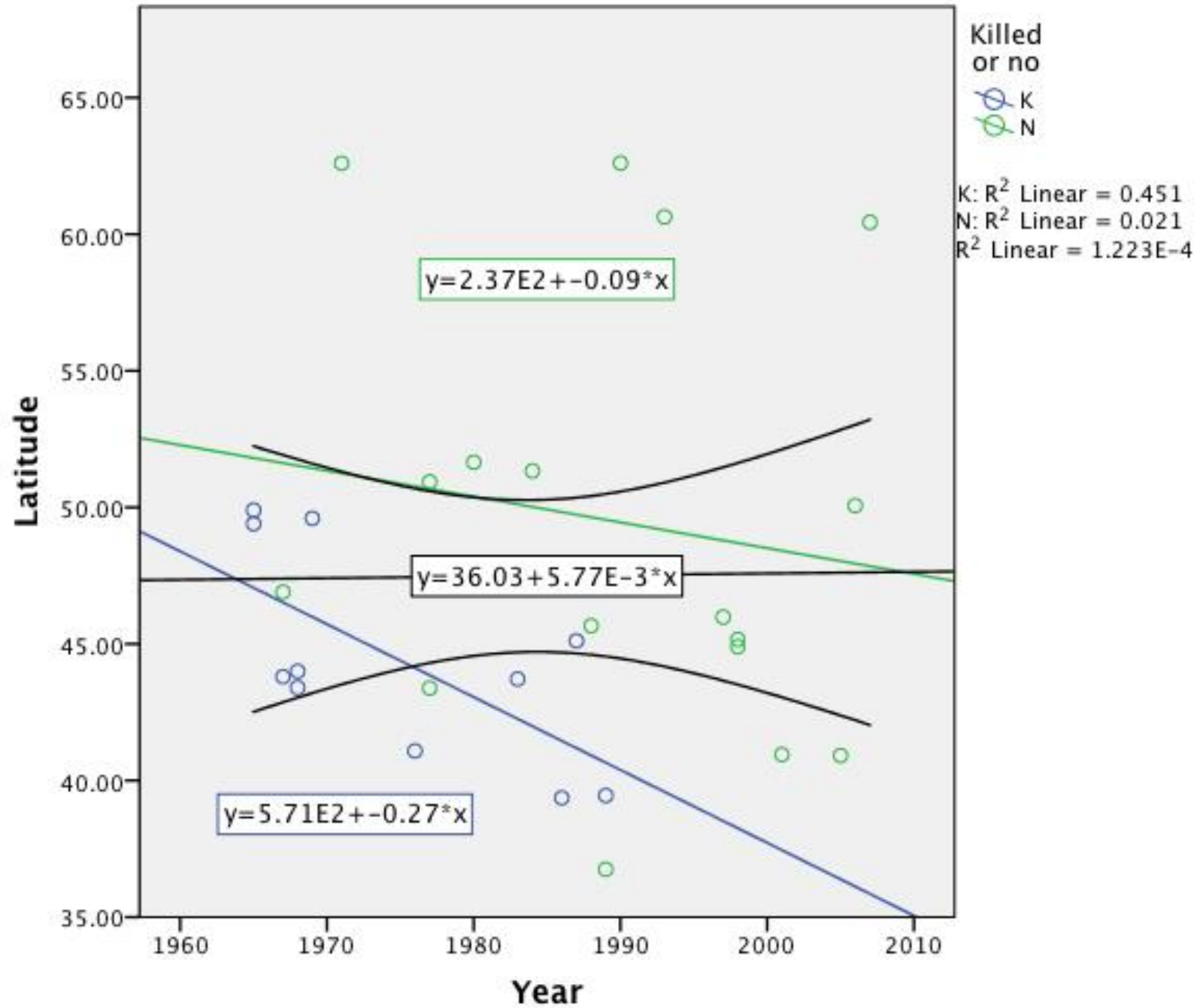
Emberiza schoeniclus



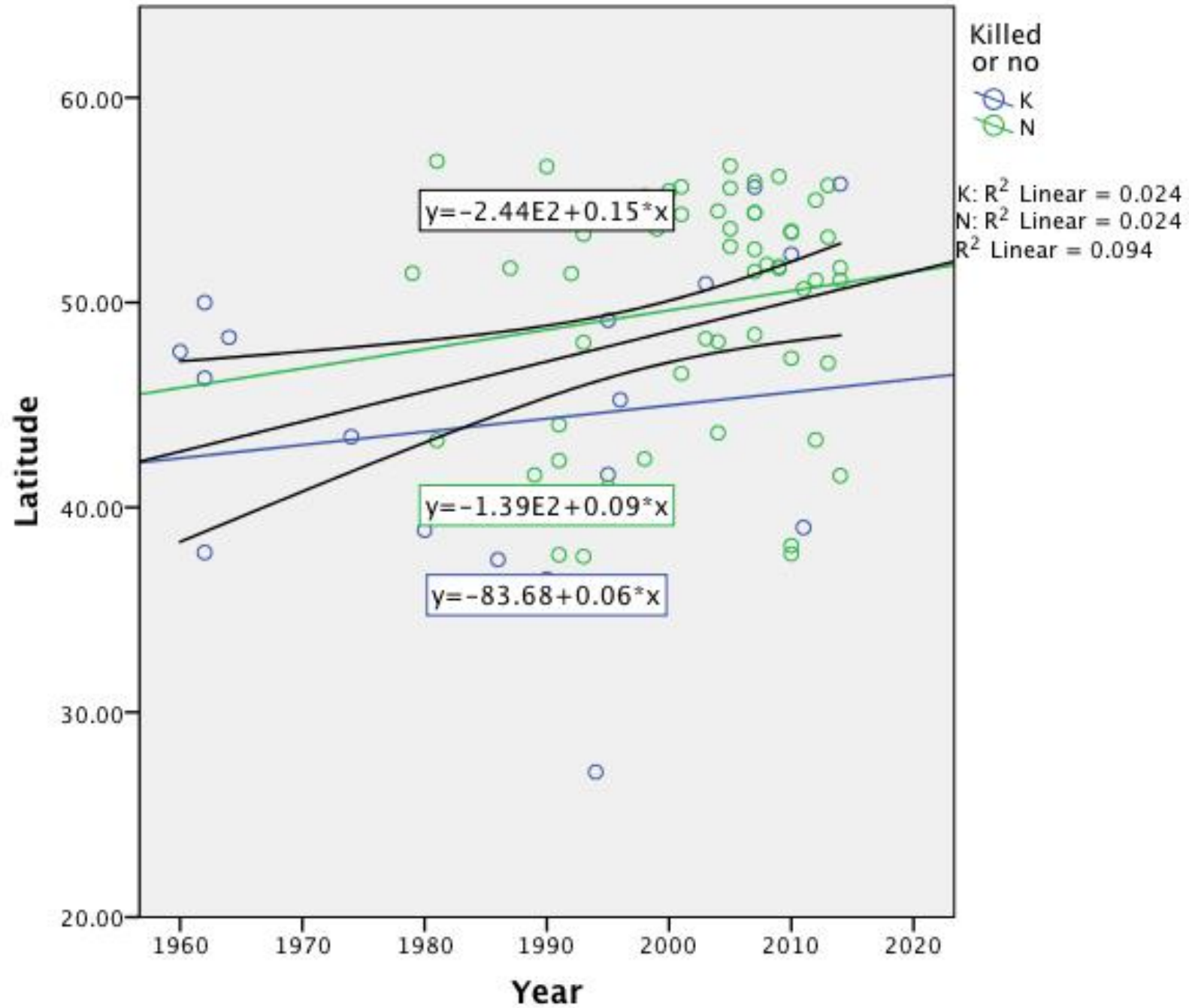
Erithacus rubecula



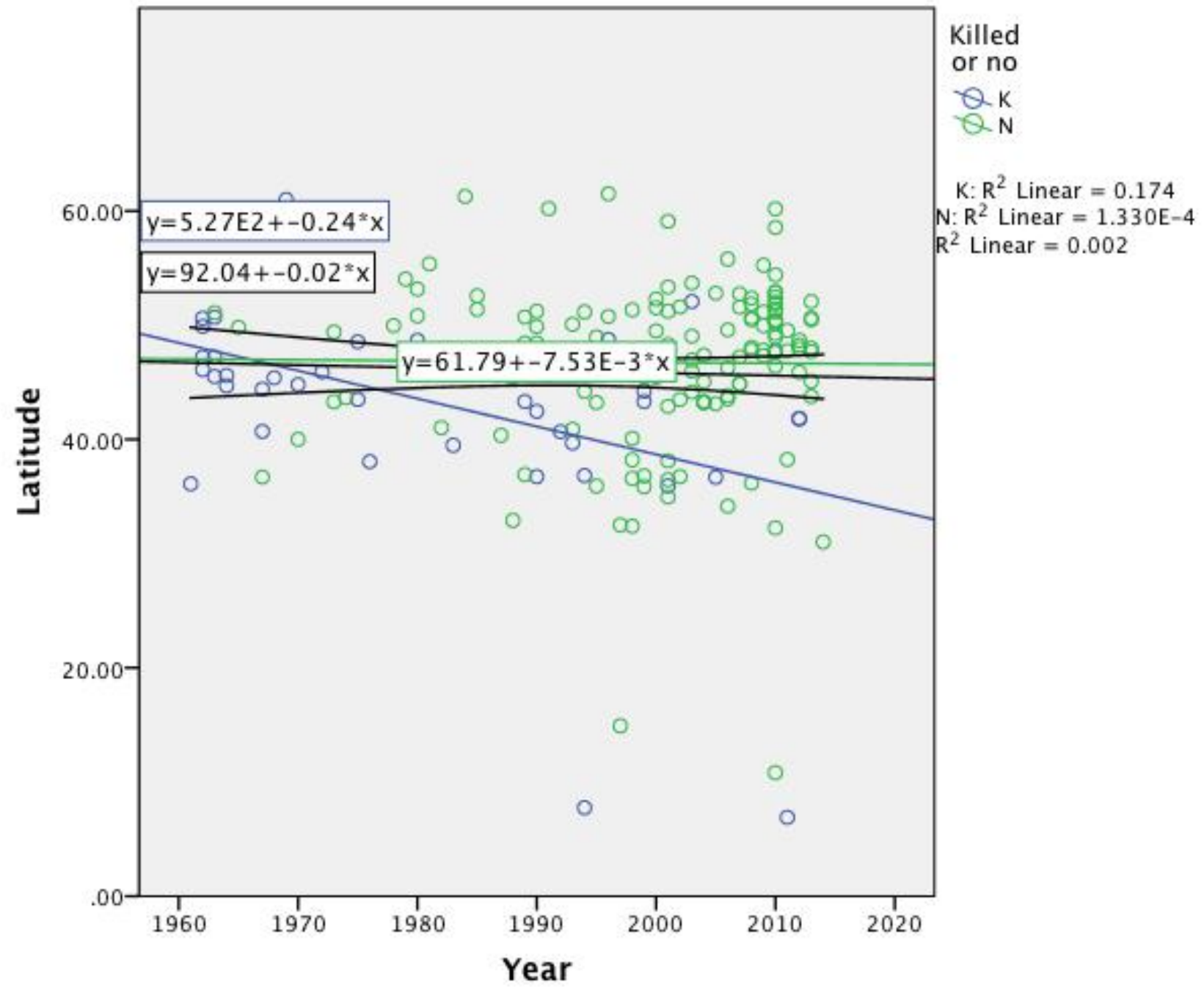
Falco columbarius



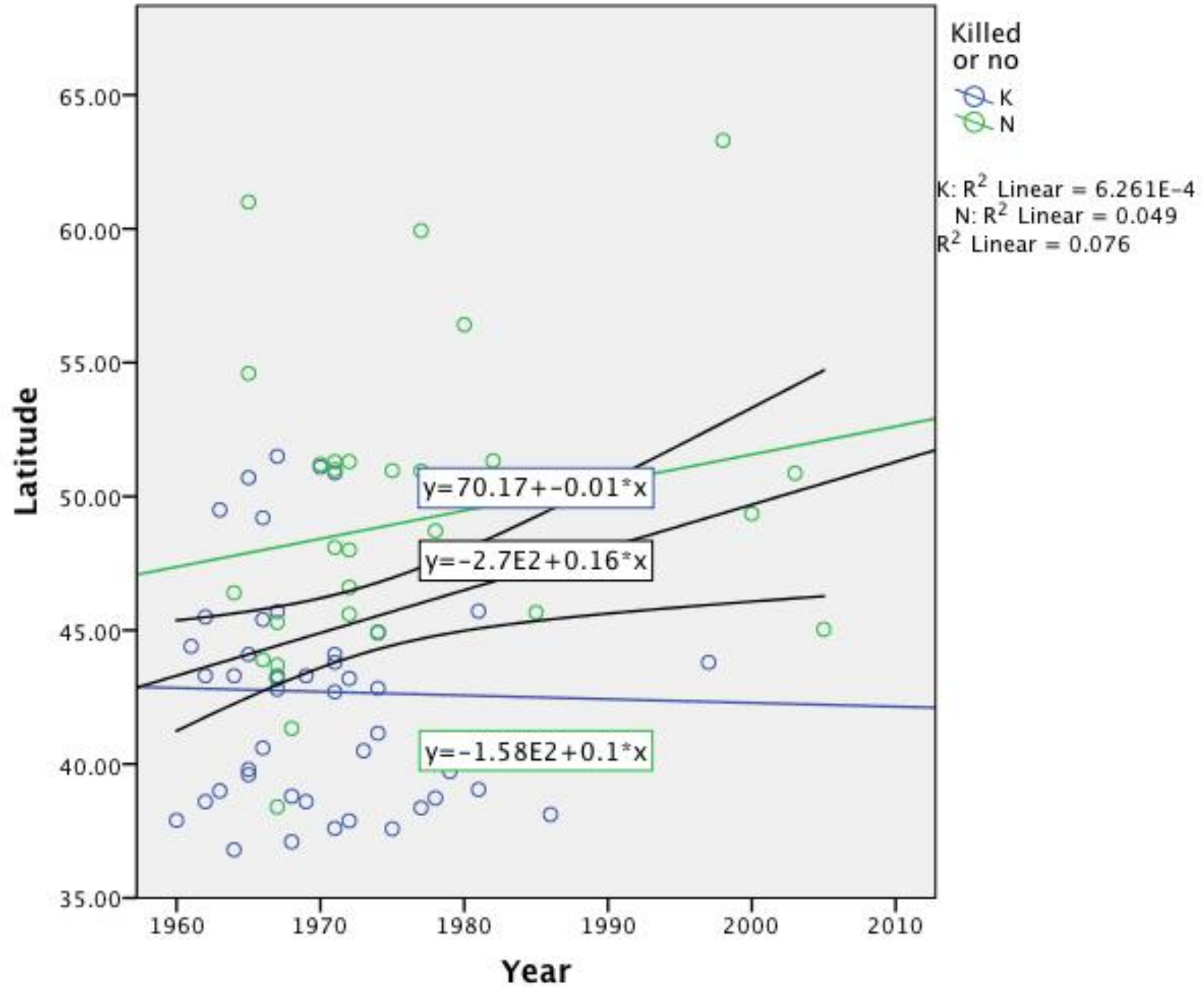
Falco peregrinus



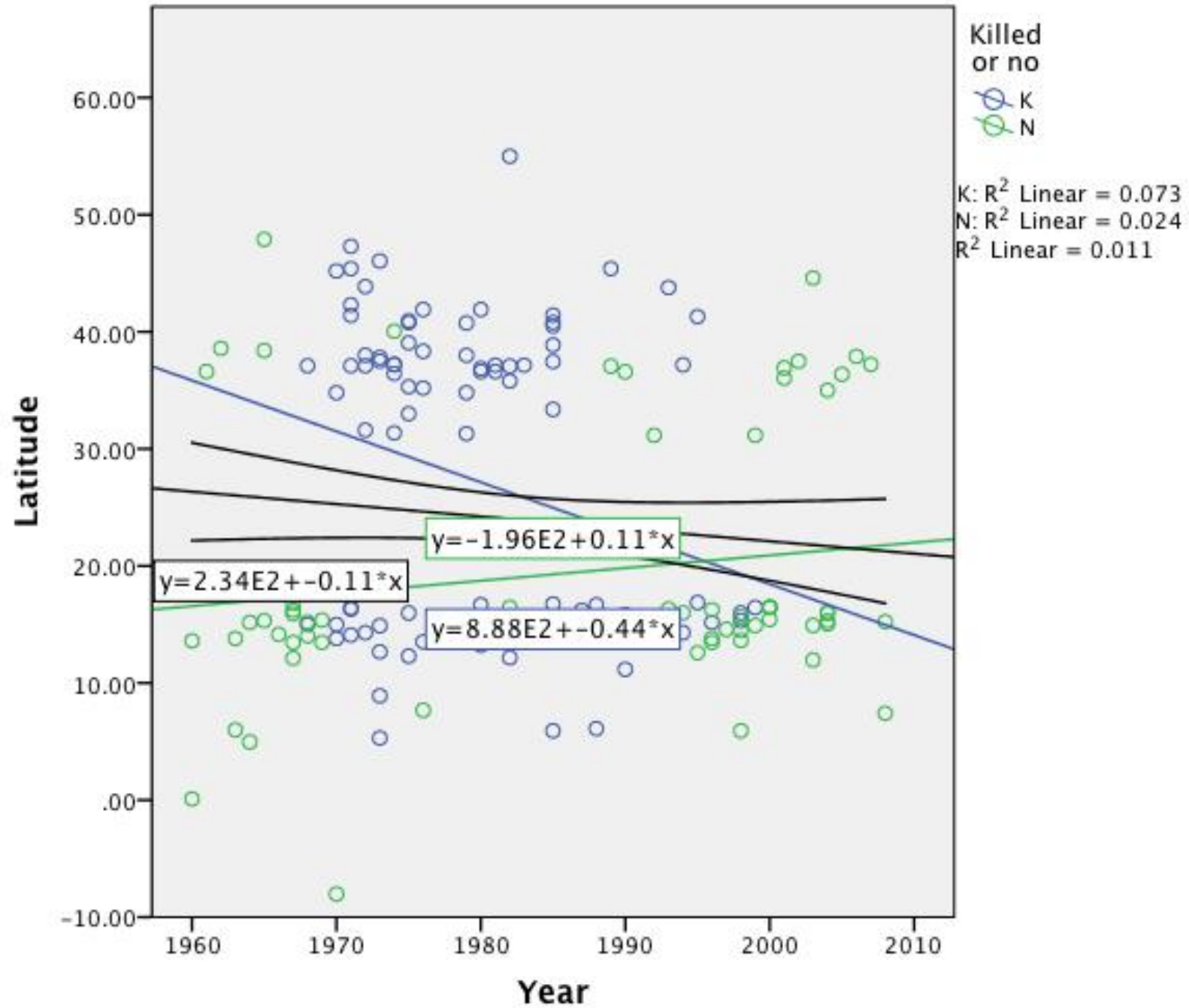
Falco tinnunculus



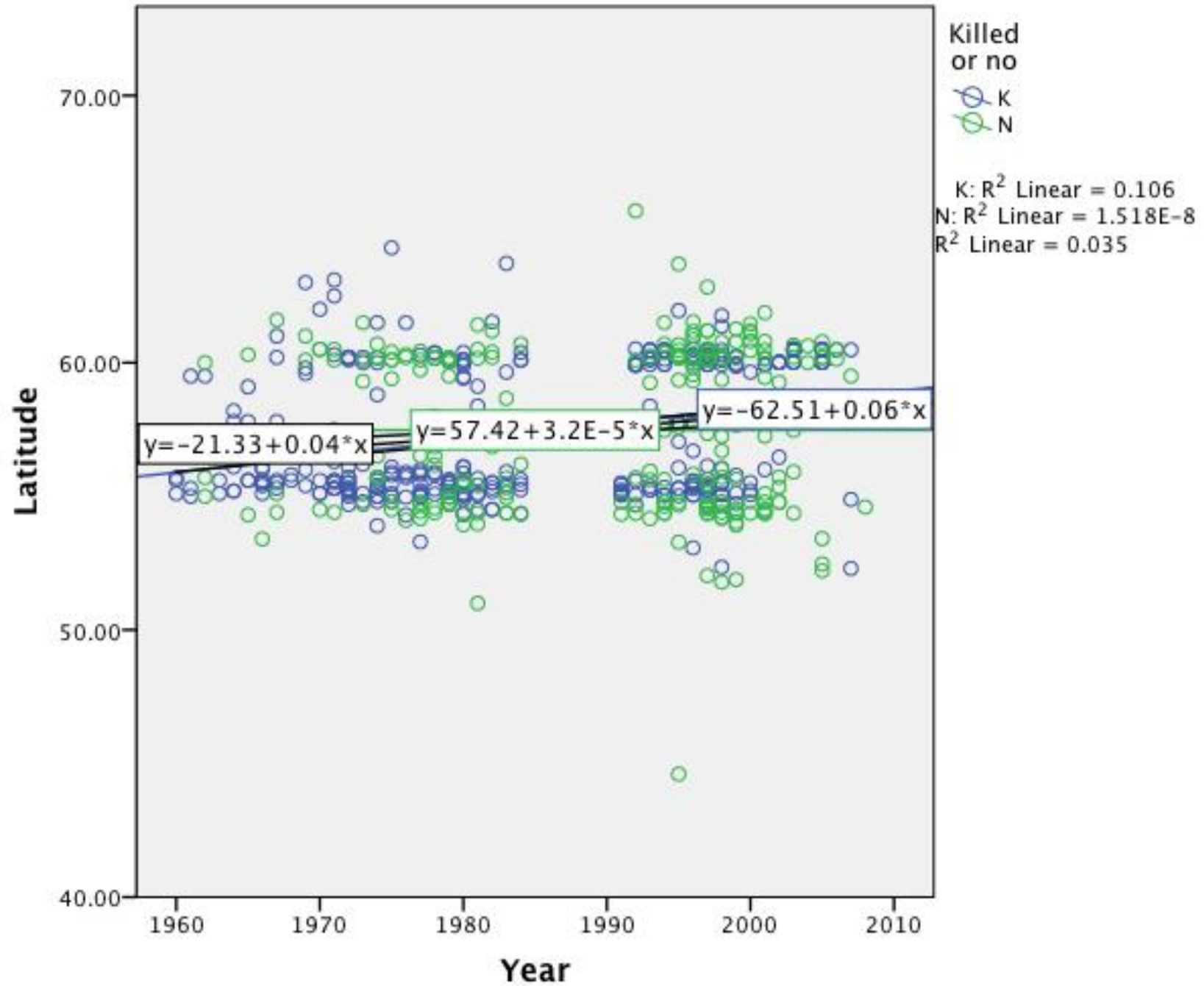
Fringilla coelebs



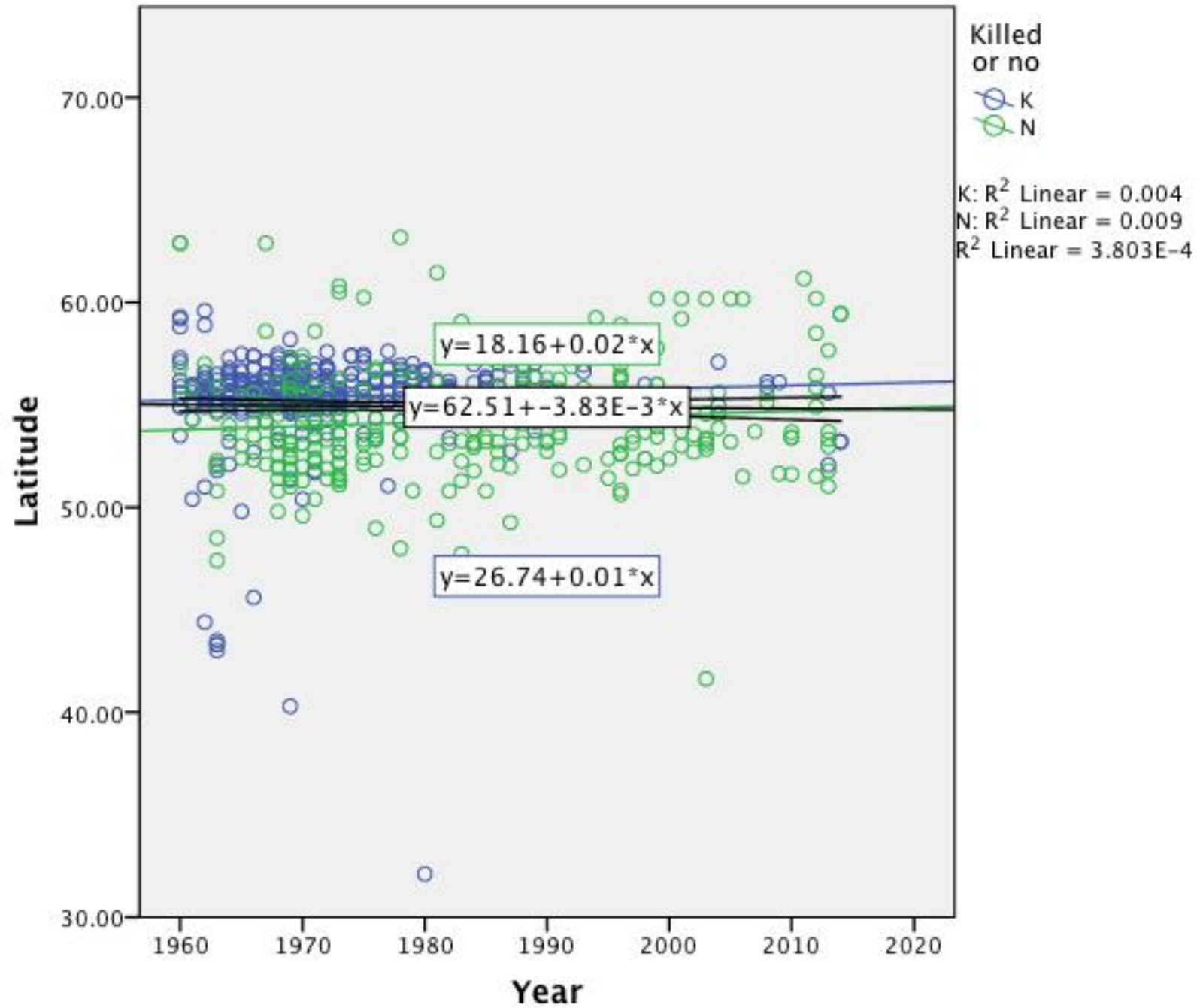
Hydroprogne caspia



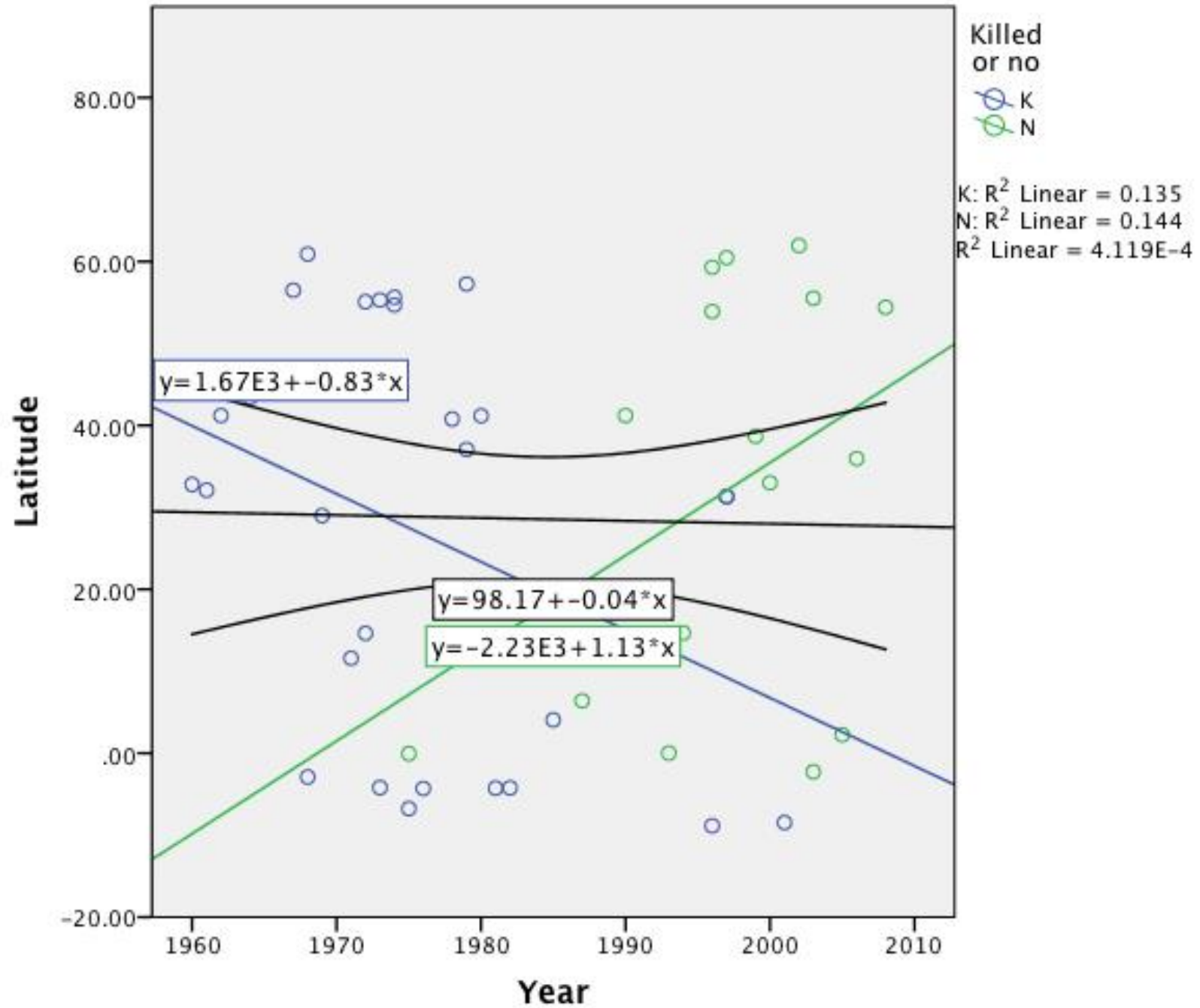
Larus argentatus



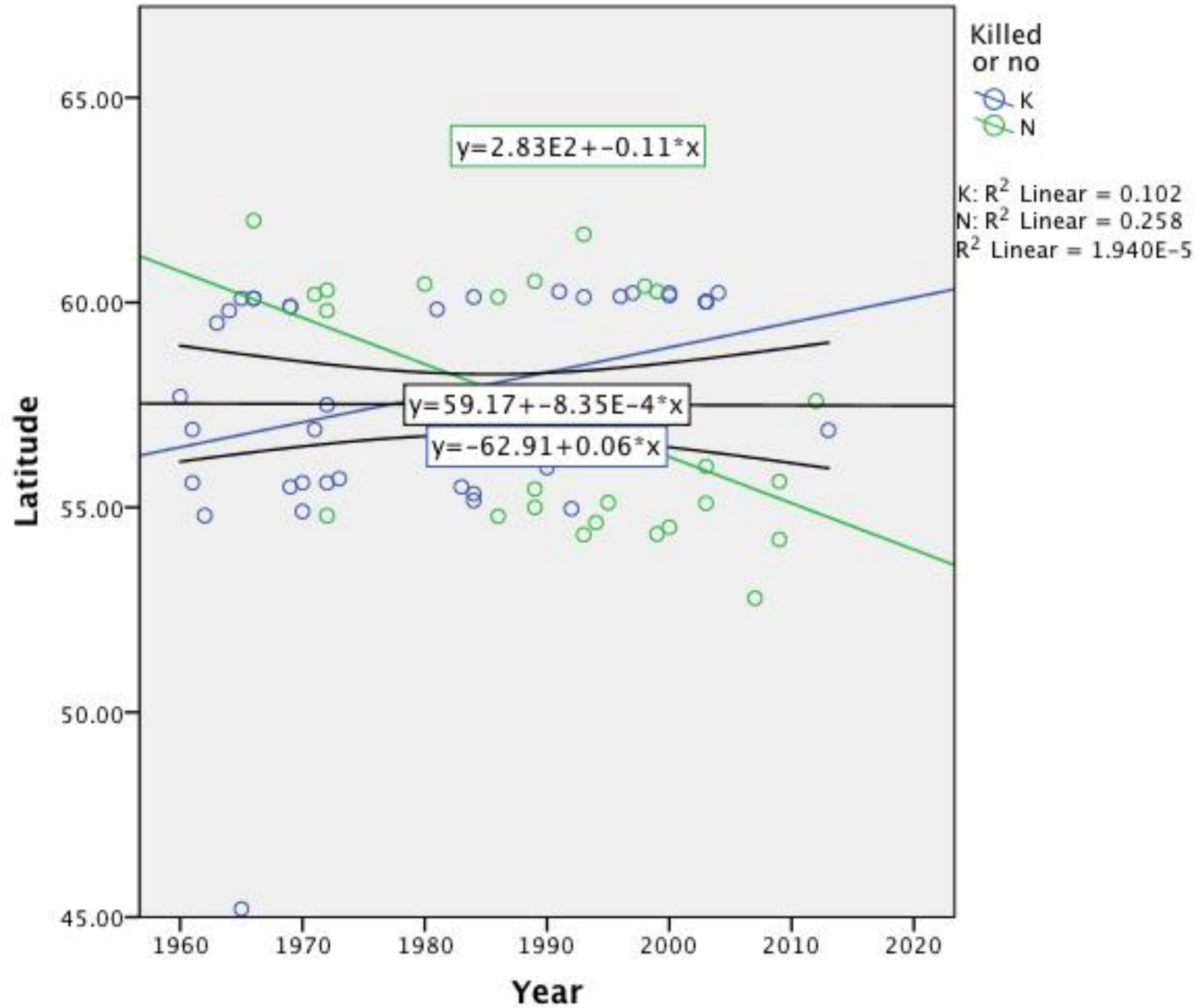
Larus canus



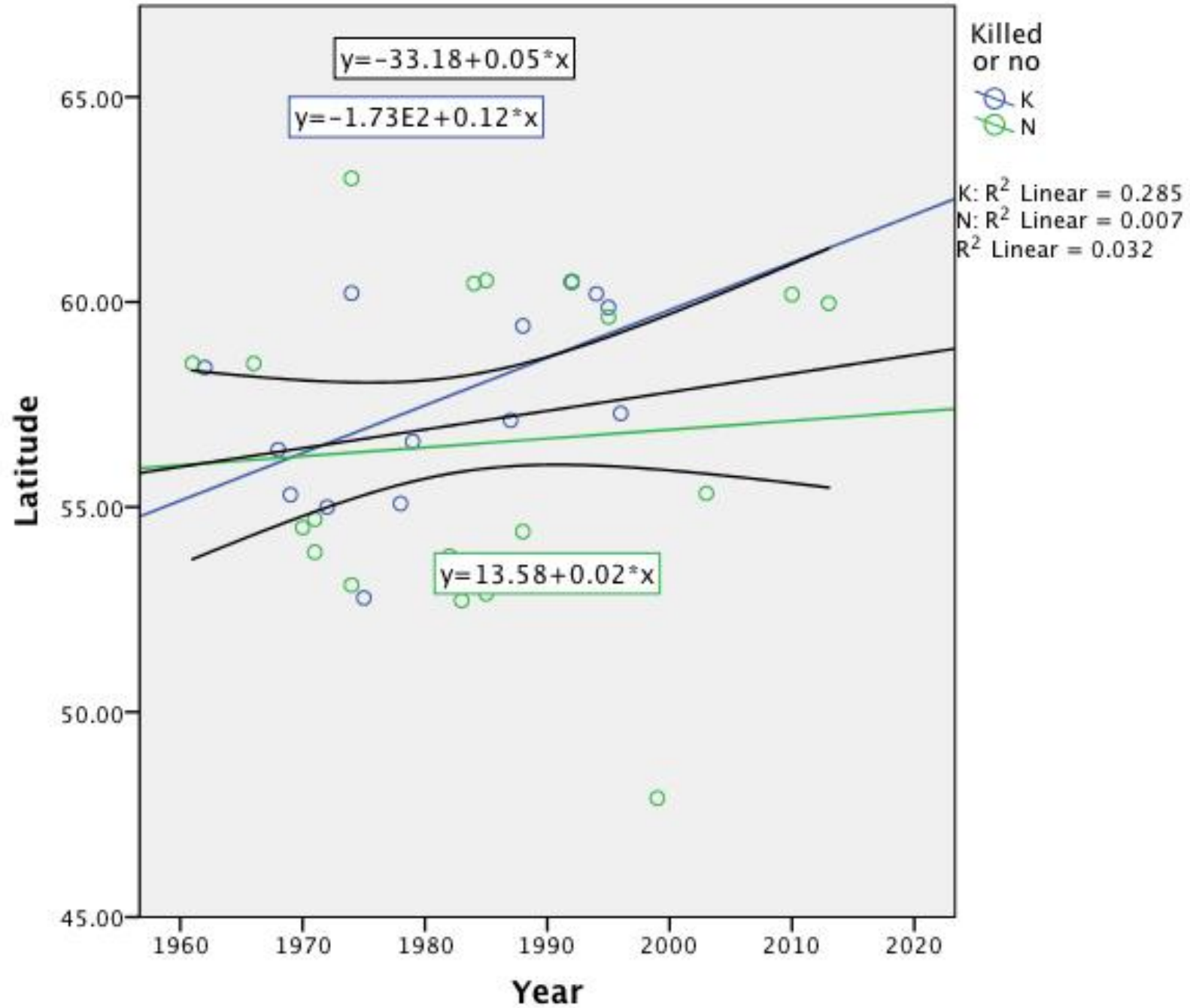
Larus fuscus



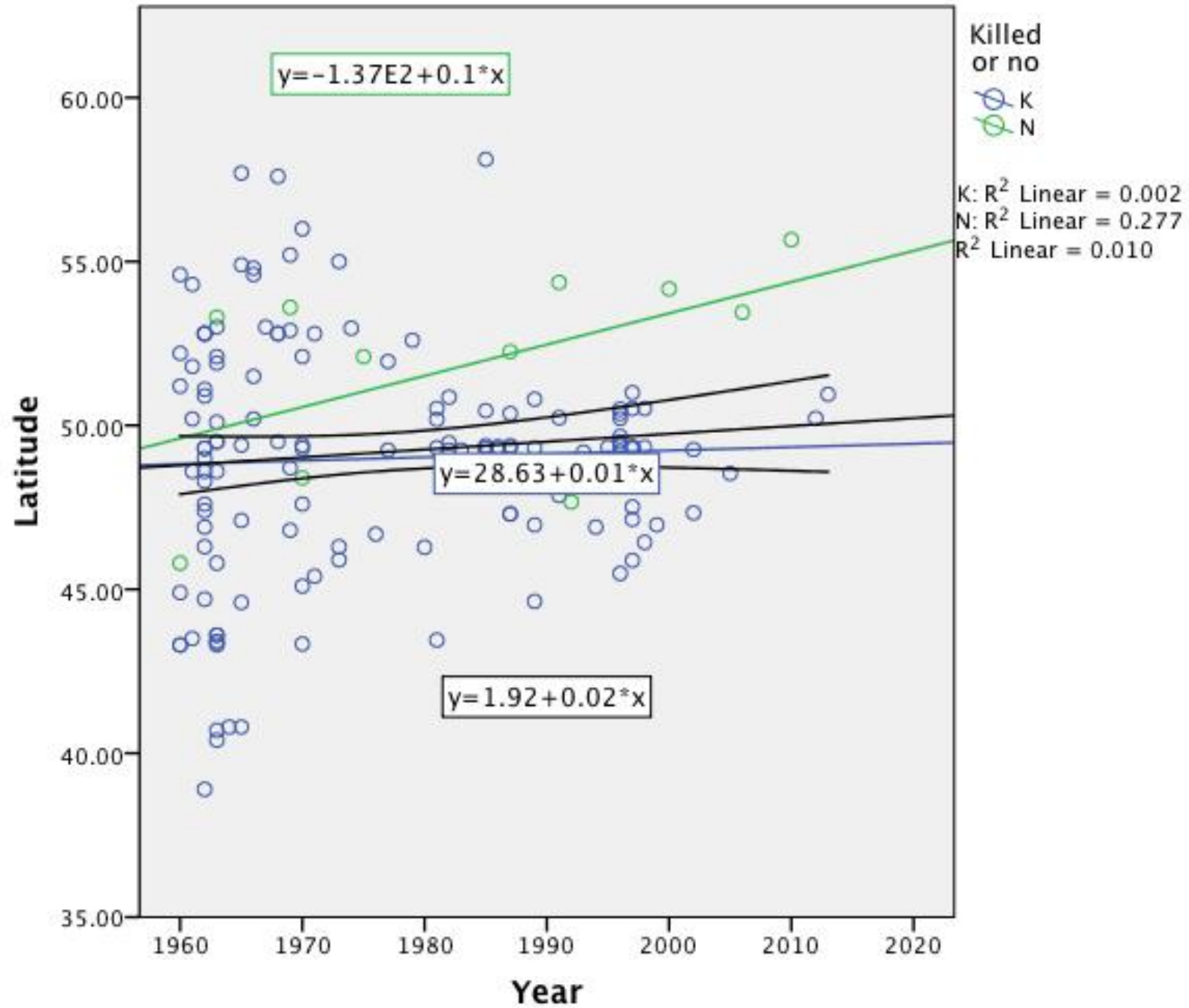
Larus marinus



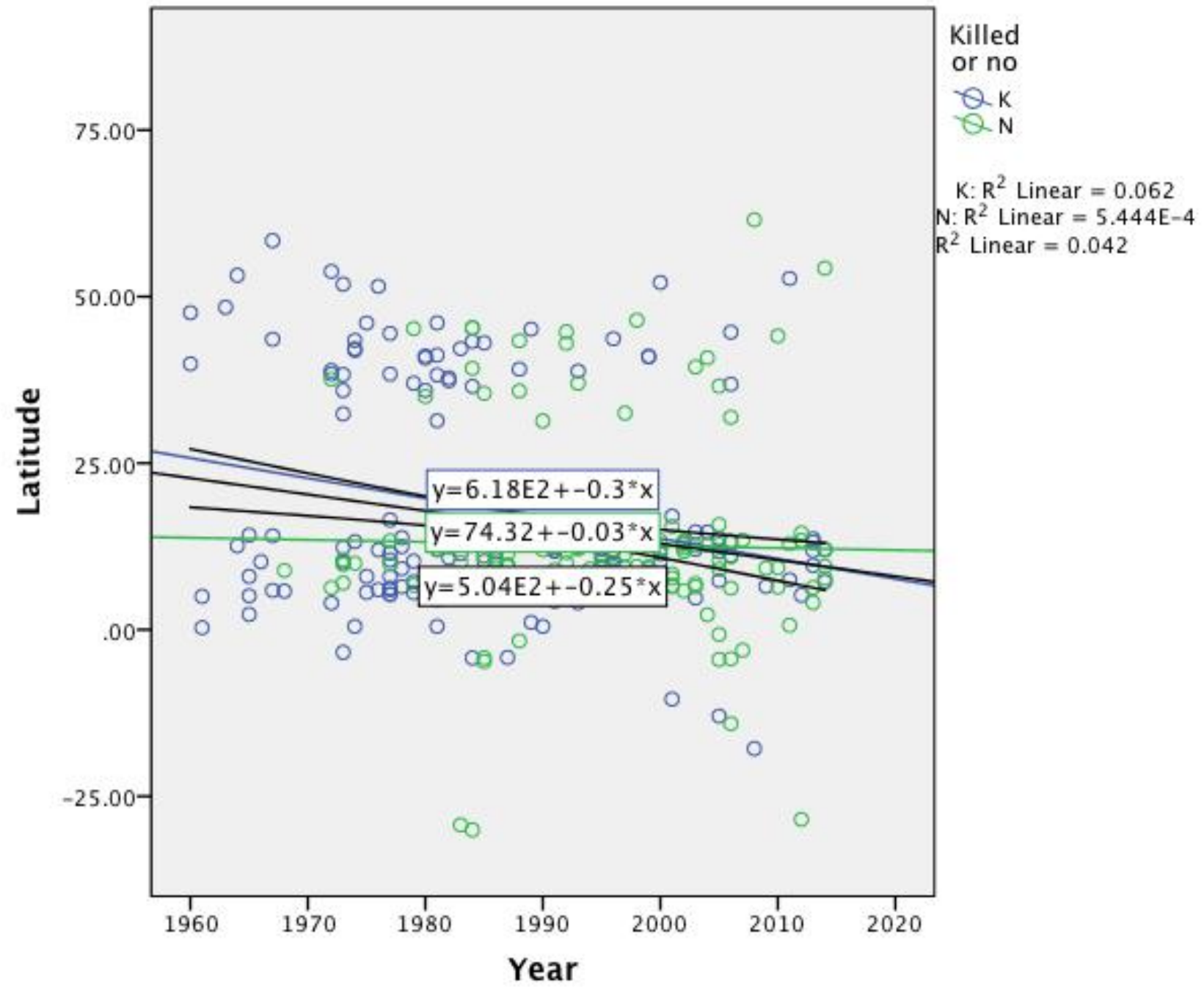
Mergus merganser



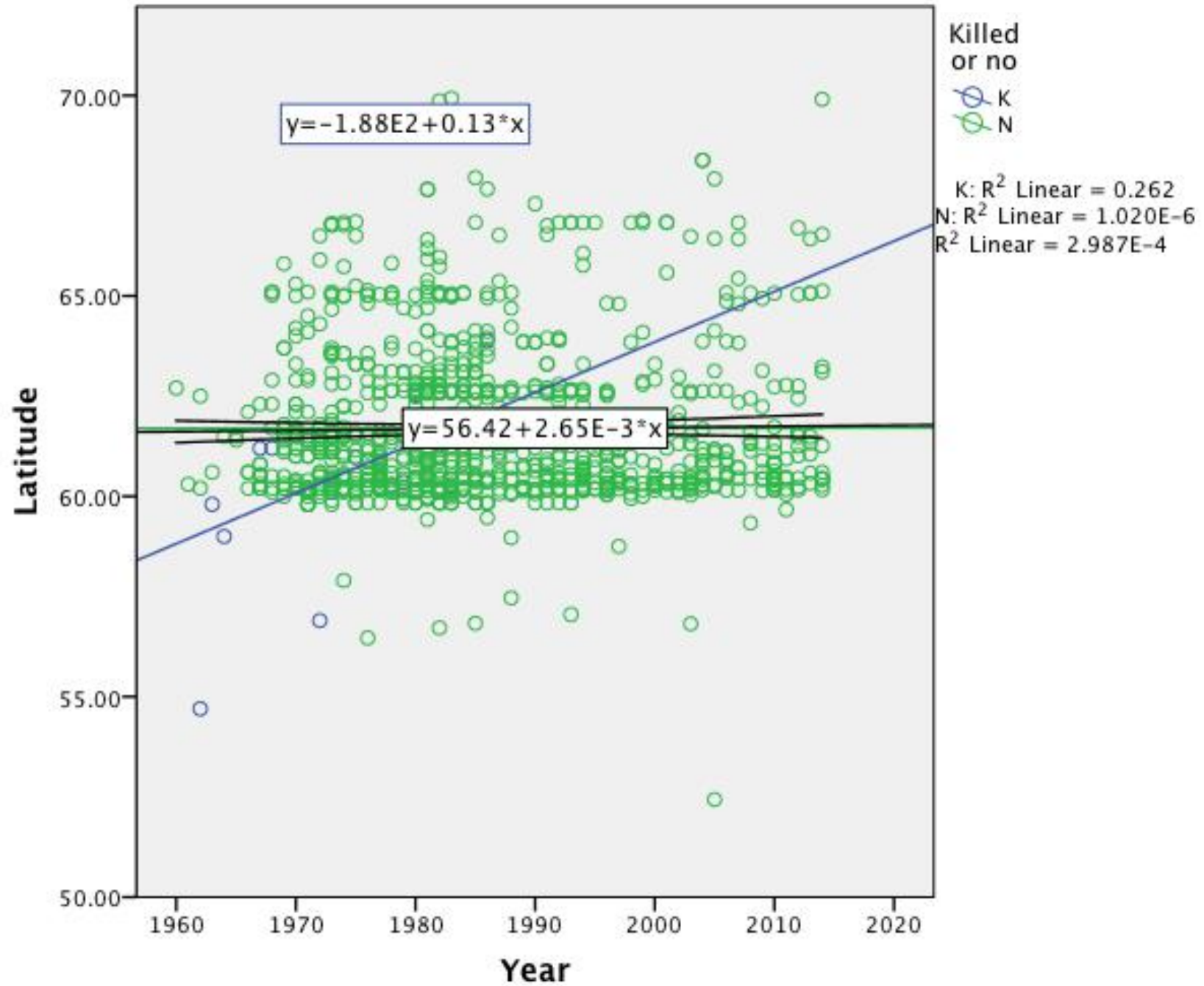
Numenius argata



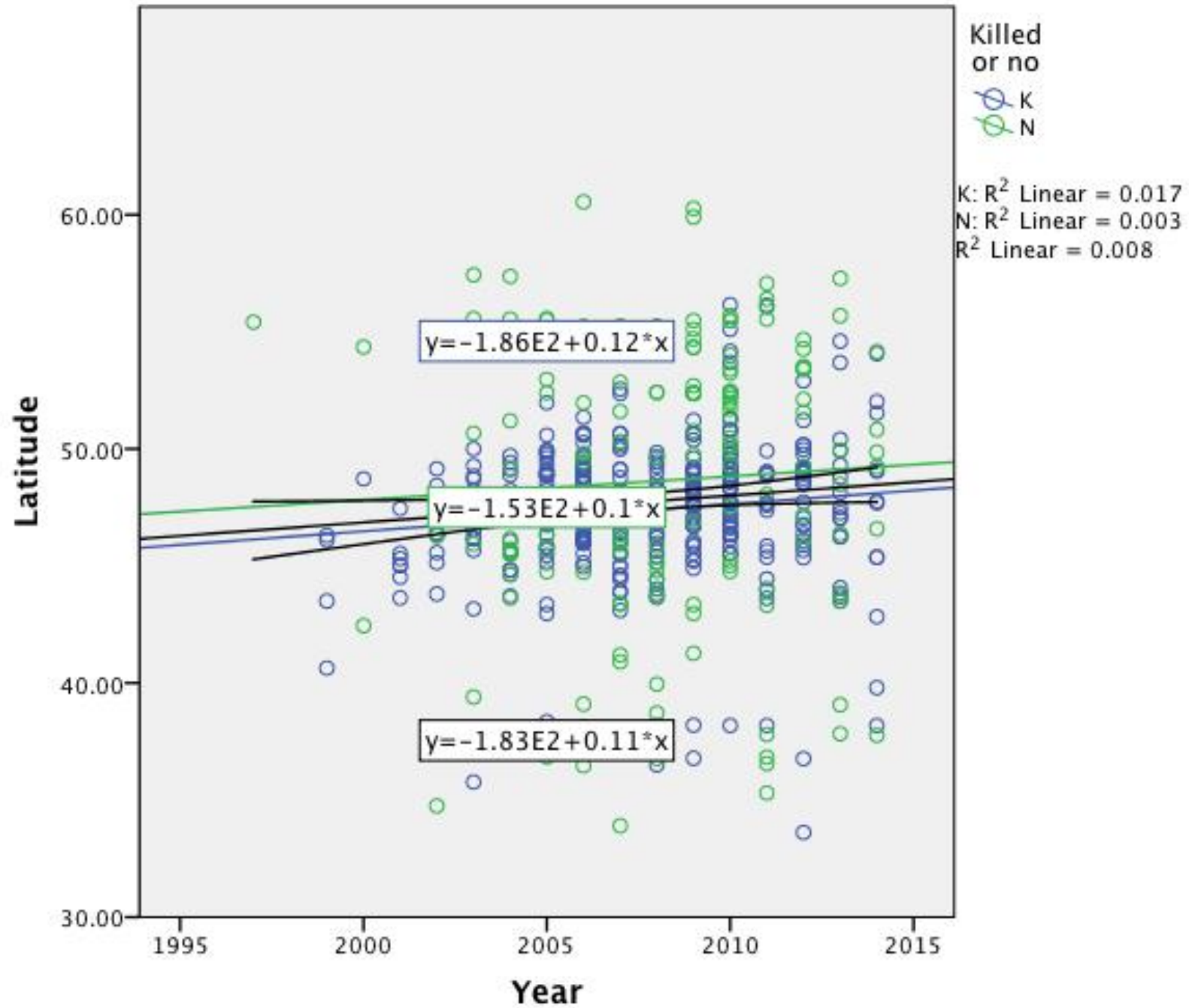
Pandion haliaetus



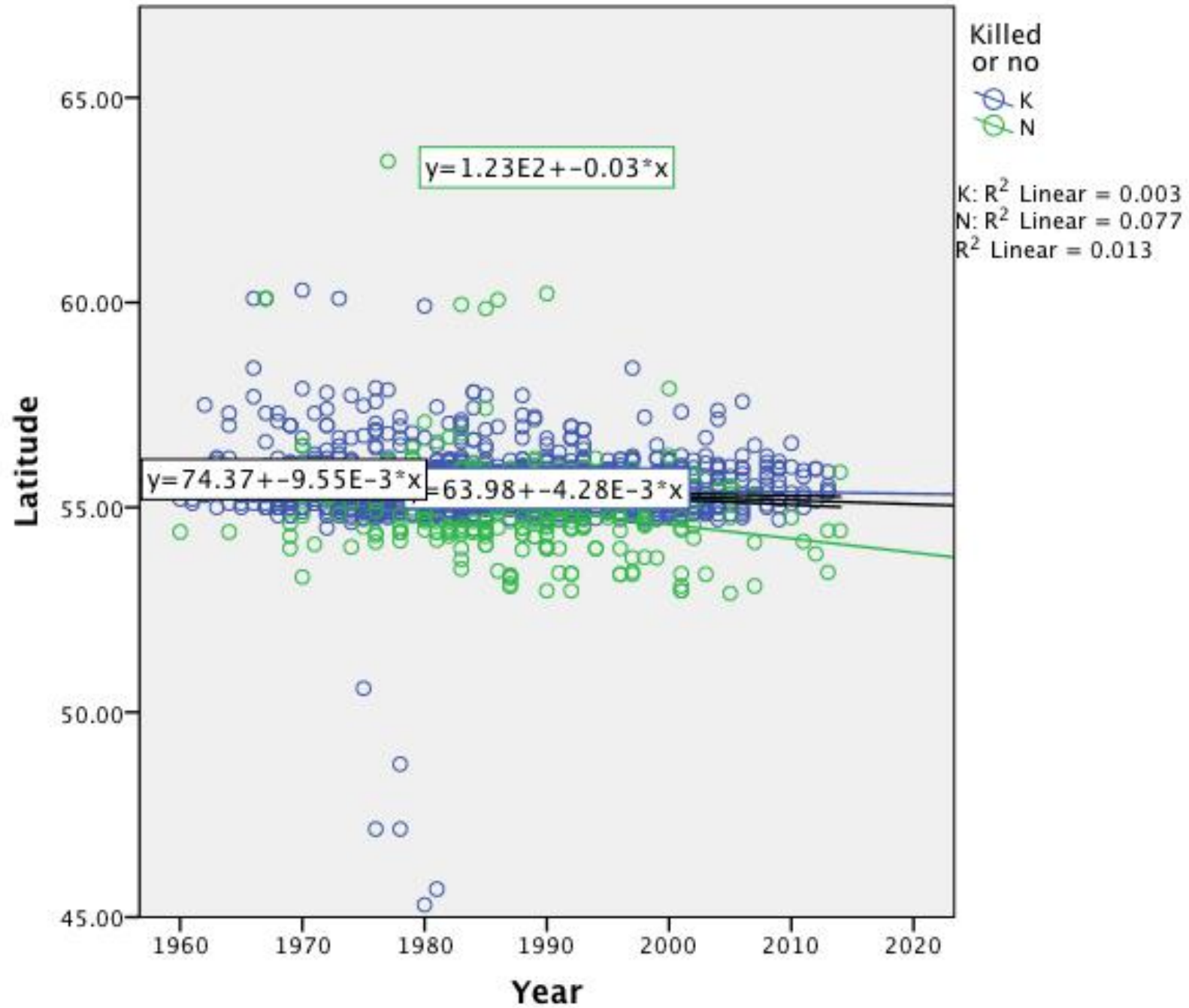
Parus major



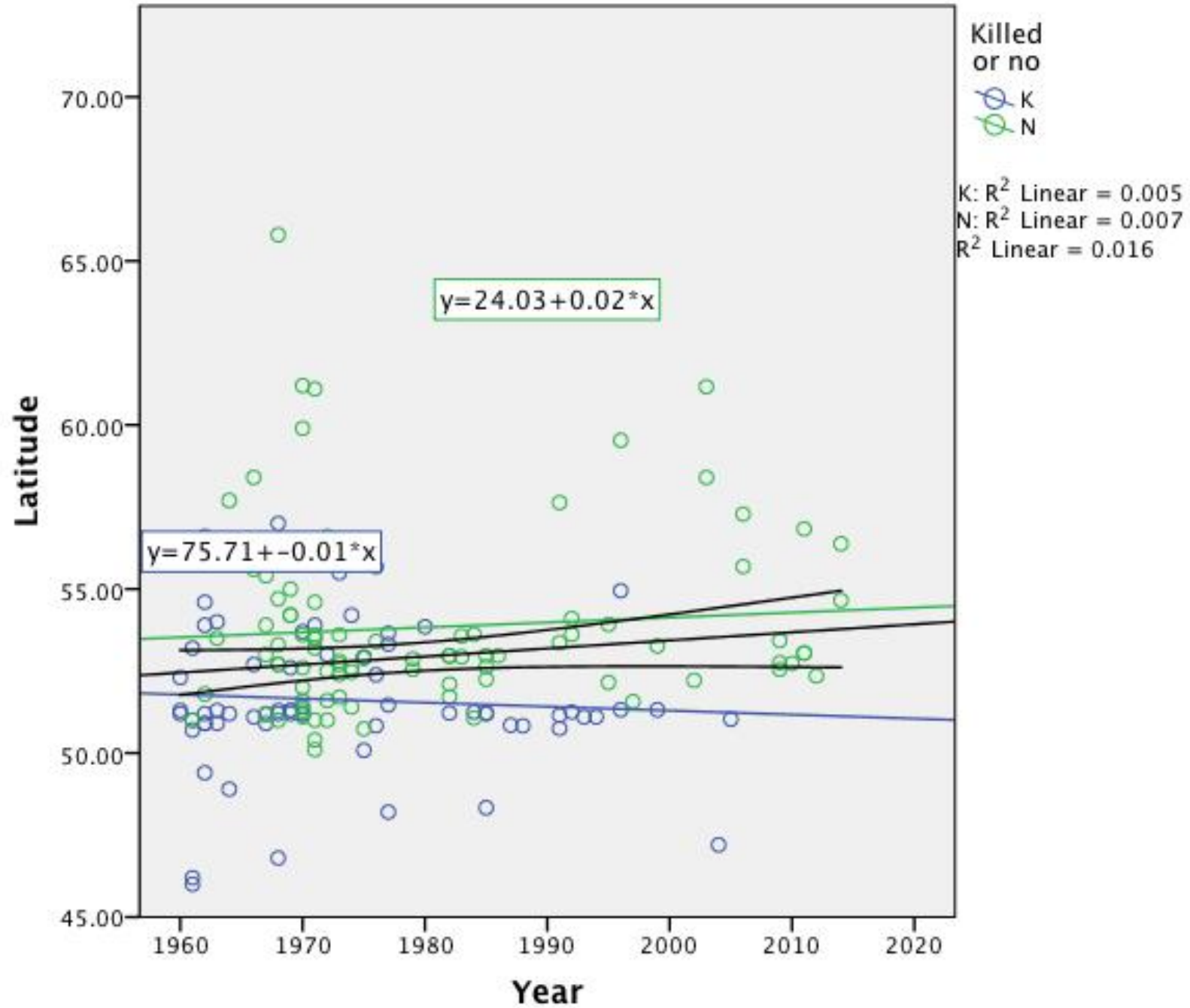
Phalacrocorax carbo



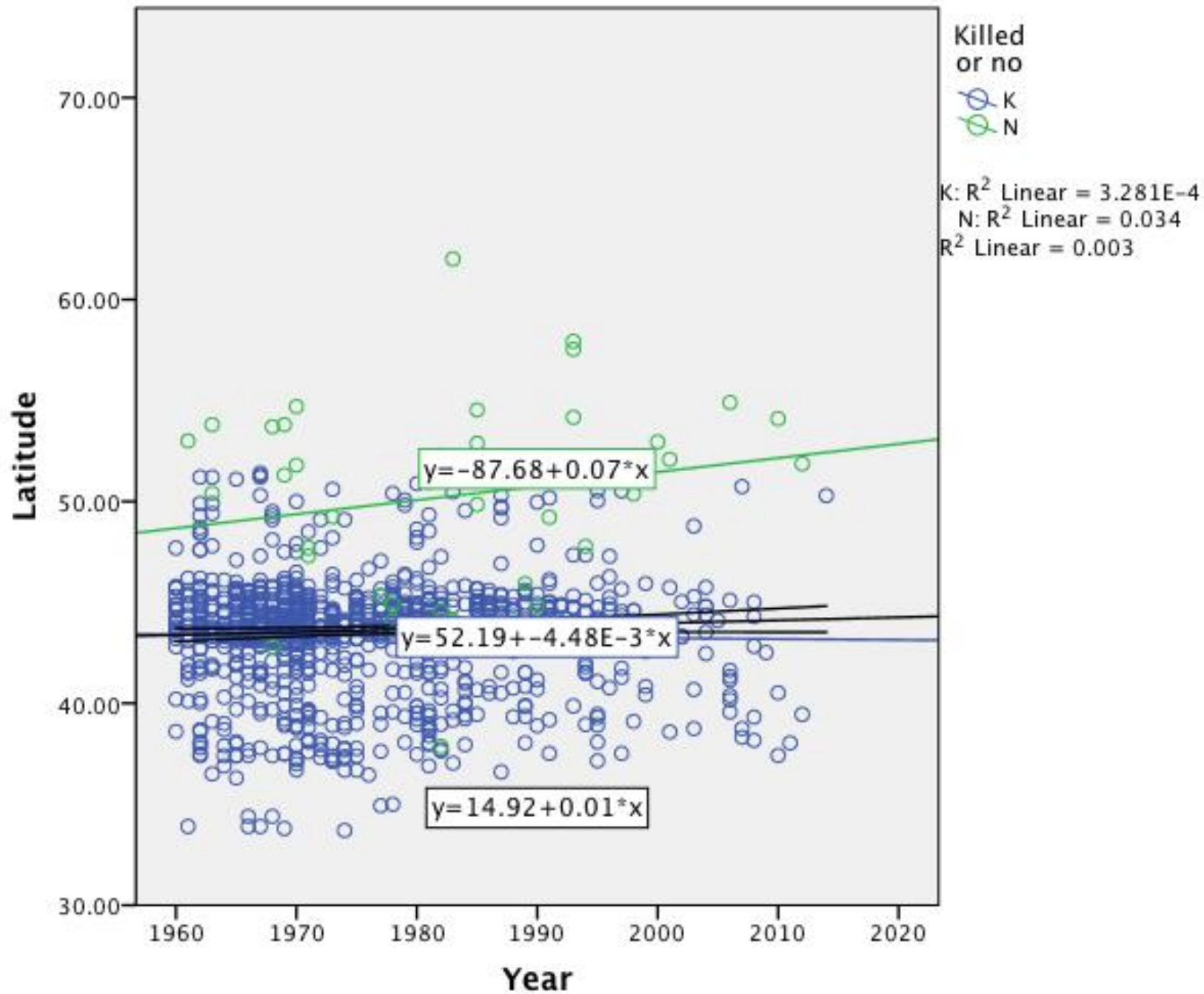
Somateria mollissima



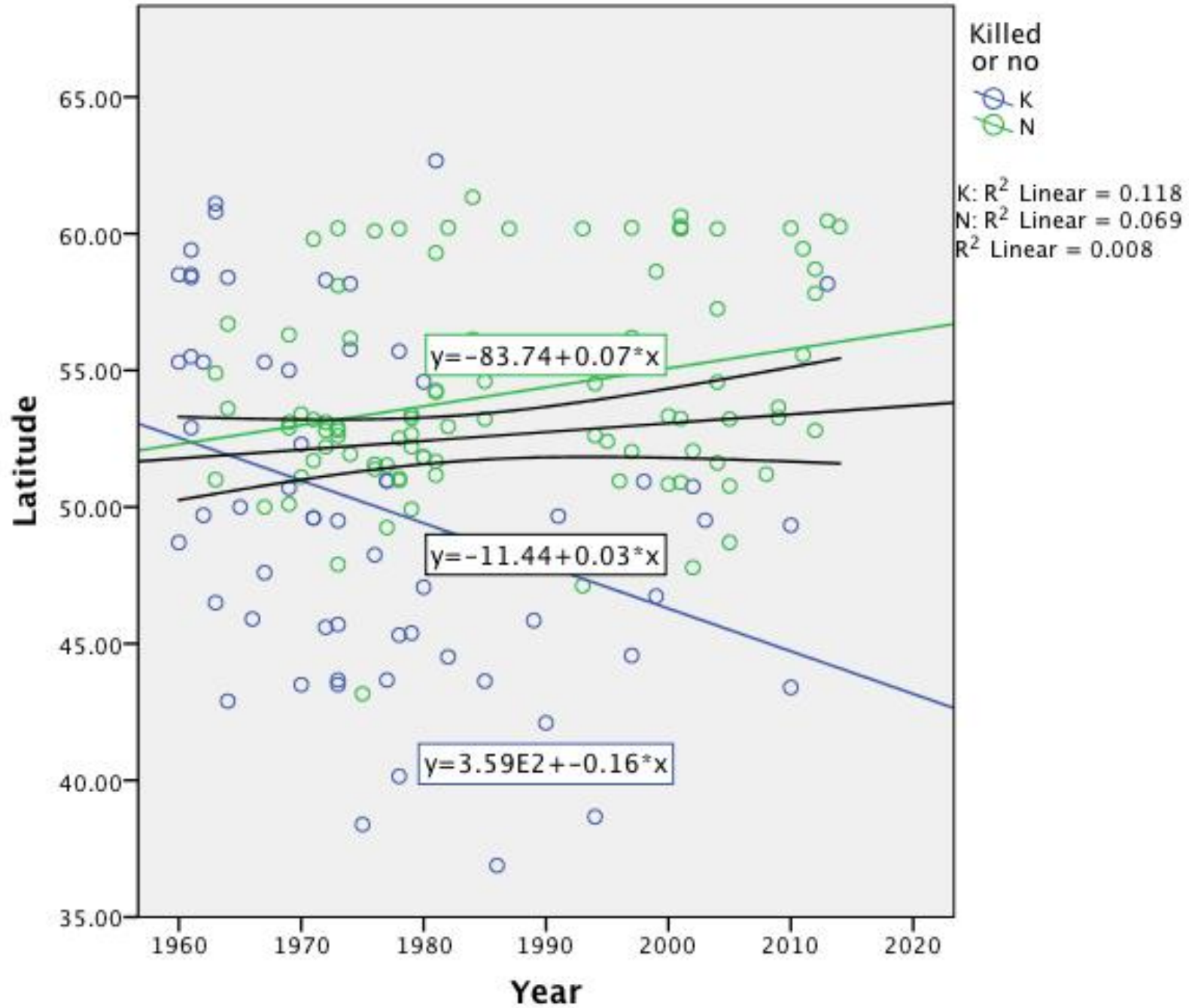
Sturnus vulgaris



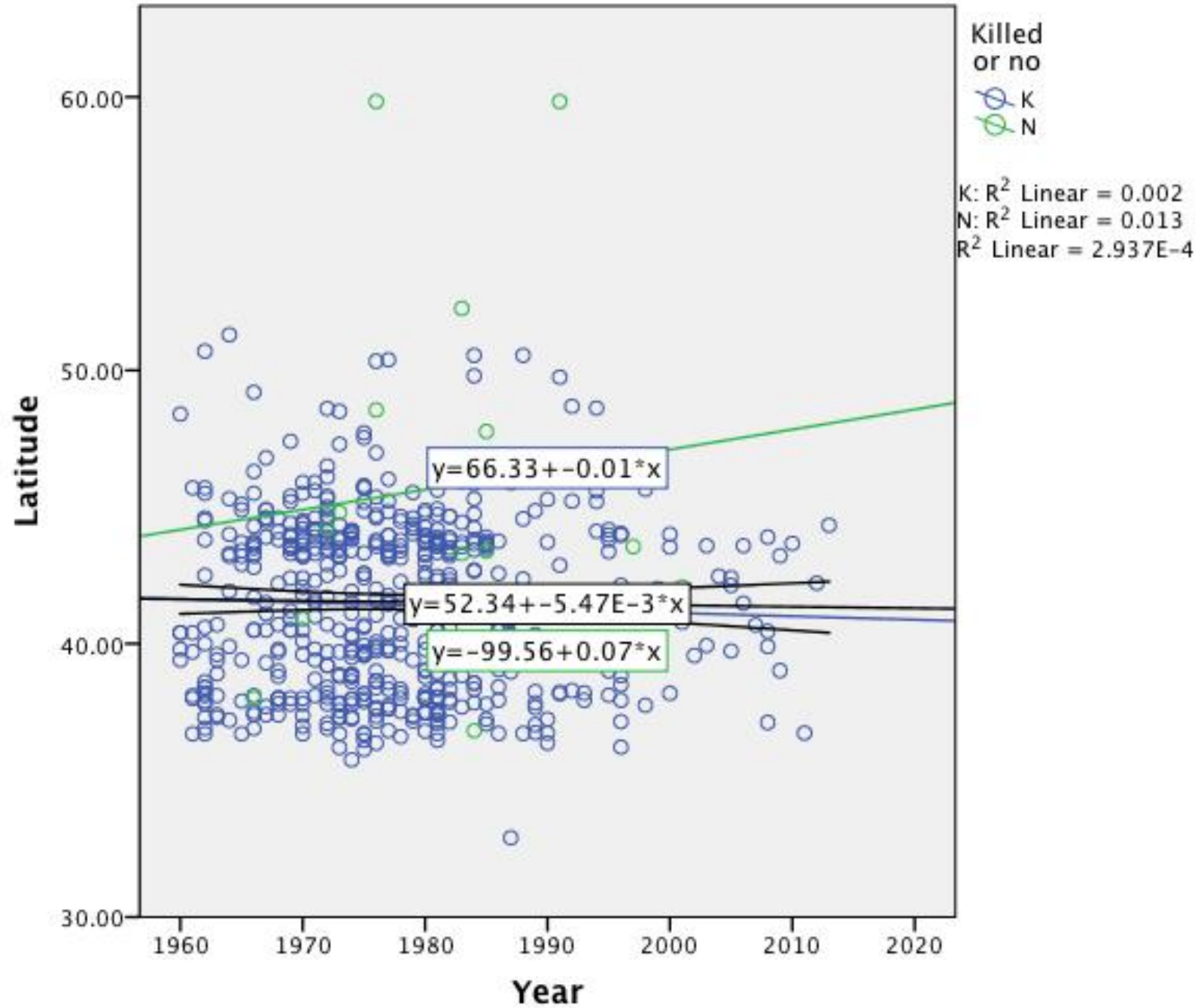
Turdus iliacus



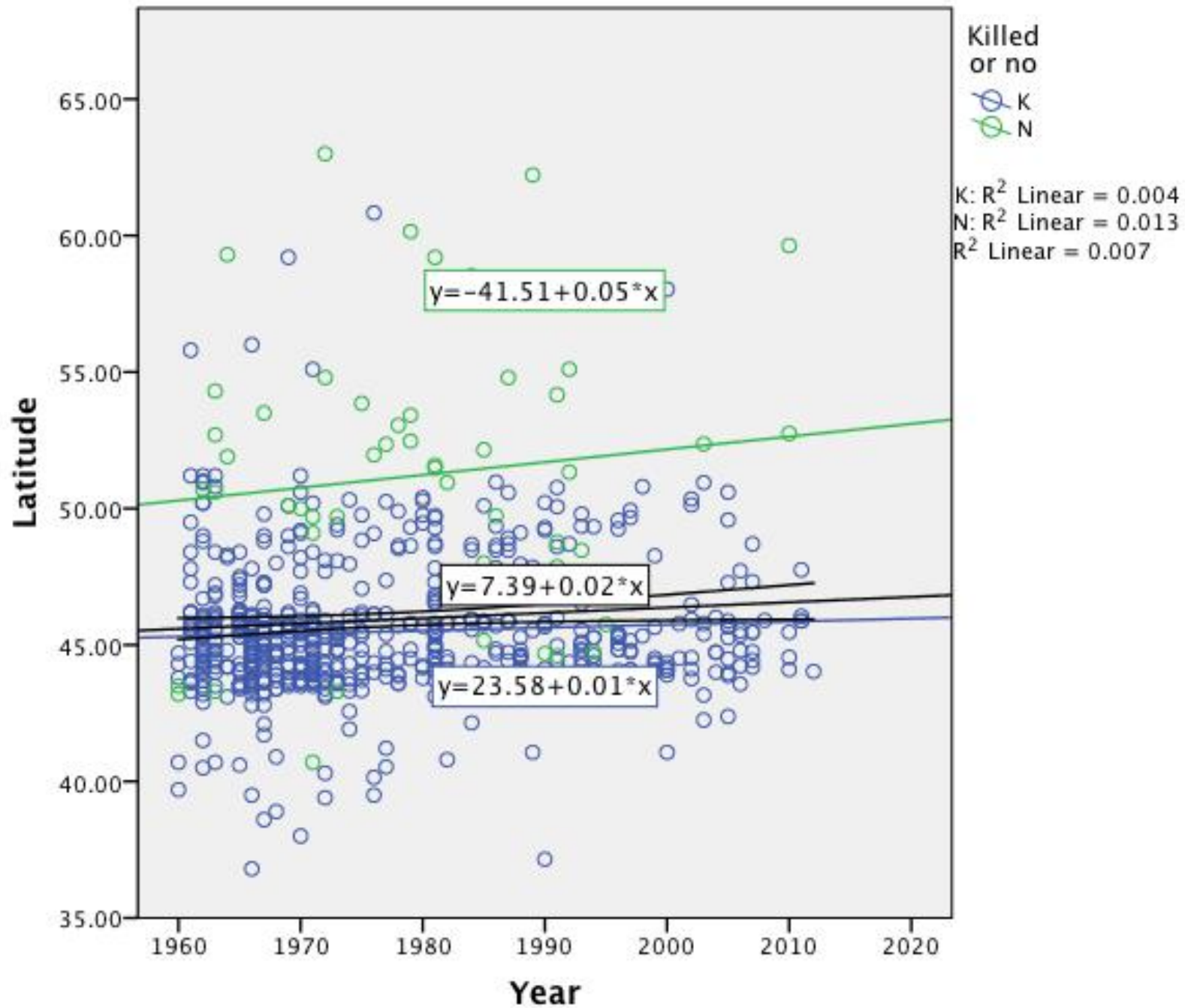
Turdus merula



Turdus philomelos



Turdus pilaris



Vanellus vanellus

