

Supplementary material

Volodymyr M. Kucherenko* 2024: The selective consumption of European ivy (*Hedera helix*) berries by the Common Blackbird (*Turdus merula*). — *Ornis Fennica* 101: 131–137.

V. M. Kucherenko,
V. I. Vernadsky Crimean Federal University,
Prospekt Vernadskogo 4, Simferopol, Republic of Crimea, 295007

* Corresponding author's e-mail: v.kucher1981@gmail.com

Table S1. The results of a GLM predicting seed consumption by blackbirds. See figure 1 in the main text for explanations of the axes.

	Estimate	Std. Error	<i>p</i>-value
Intercept	36.6	23.3	0.12
Length of major axis	10.4	4.0	0.01*
Length of minor axis	-10.9	6.0	0.07
Aspect ratio	-36.5	15.4	0.02**

Notes: * $-p < 0.05$, ** $-p < 0.01$

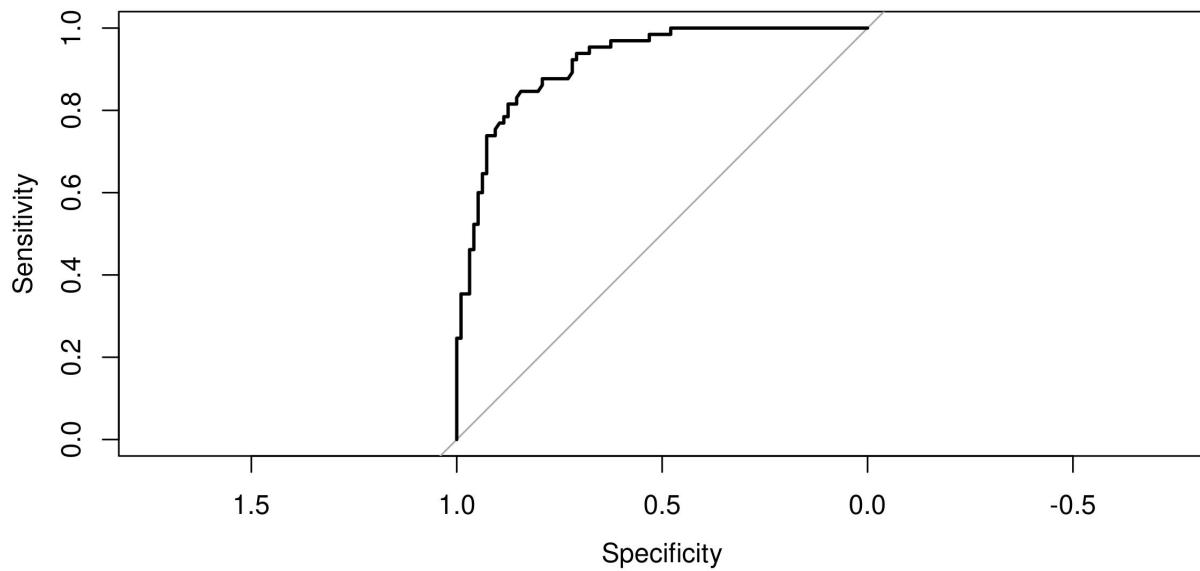


Fig. S1. ROC plot for GLM for evaluating the probability of seeds being consumed by blackbirds based on length of the major axis, minor axis, and aspect ratio. See figure 1 in the main text for explanations of the axes.